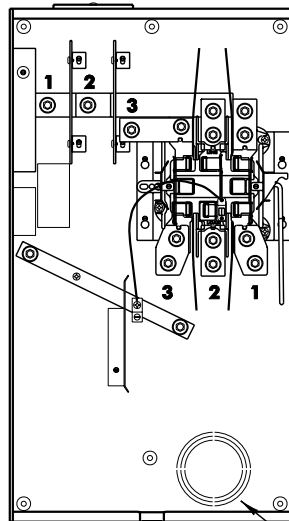


GENERAL SERVICE

120/208V 3Ø 4-WIRE /
320 AMP OVERHEAD OR UGND SOCKET

4.02.15

M422D



THIS IS KNOCK OUT FOR
LINE-SIDE CONDUCTORS
ONLY WHEN SOCKET
IS USED FOR UGND

3 1/2" KNOCKOUTS FOR
LOAD CONDUCTORS

NOTES:

REFER TO SECTION 6.14

TERMINALS FOR MAXIMUM
600 KCMIL COPPER OR ALUMINUM
CONDUCTOR.

RISER PIPE MUST BE AN EMT,
RIGID CONDUIT OR SCHEDULE
80 PVC.

PVC WEATHER HEAD MUST
BE USED ON PVC RISER.

A GROUND ROD (NEC SUPPLEMENTAL
GROUND) MUST BE INSTALLED NEAR
THE METER SOCKET WITH AN
EQUIPMENT GROUNDING CONDUCTOR
RUNNING FROM THE GROUND
ROD TO THE GROUNDING LUG
PROVIDED IN THE METER SOCKET.

CONTRACTOR MUST USE THE
KNOCKOUTS DESCRIBED BELOW
DO NOT USE ANY OTHER KNOCKOUT
OR DRILL ANY OTHER HOLES IN THE
METER SOCKET. KNOCKOUT
LOCATIONS ON DRAWING ARE
APPROXIMATE AND NOT DRAWN
TO SCALE.

KNOCKOUT LOCATION

LEFT VIEW

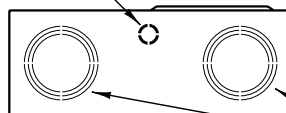
FRONT VIEW
COVER OFF

RIGHT VIEW



KNOCKOUTS FOR CONTRACTORS
EQUIPMENT GROUNDING
CONDUCTORS

3 1/2" KNOCKOUTS FOR
LOAD CONDUCTORS



4 1/2" KNOCKOUTS FOR
LOAD CONDUCTORS