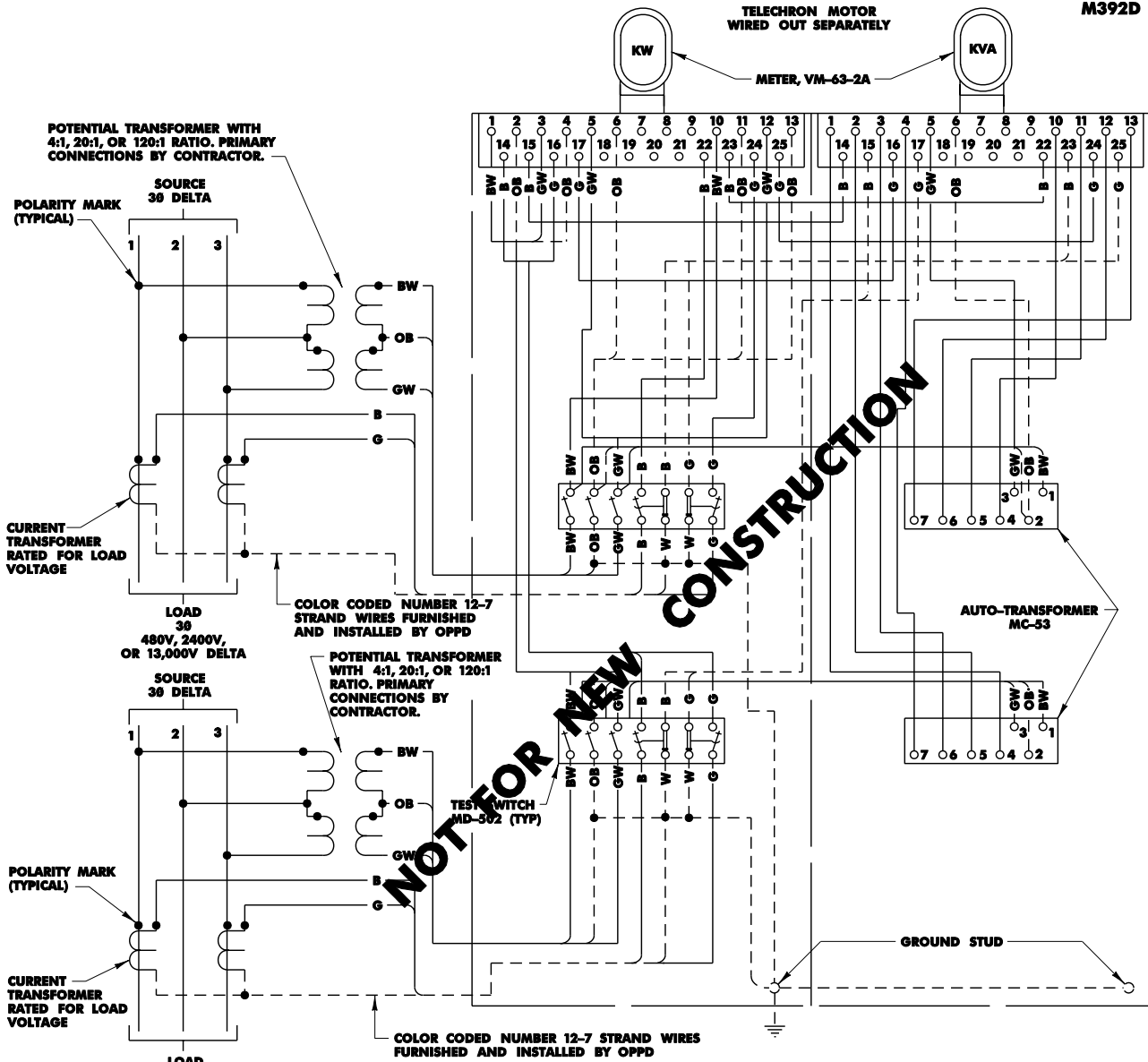


TWO CIRCUIT TOTALIZED METERING

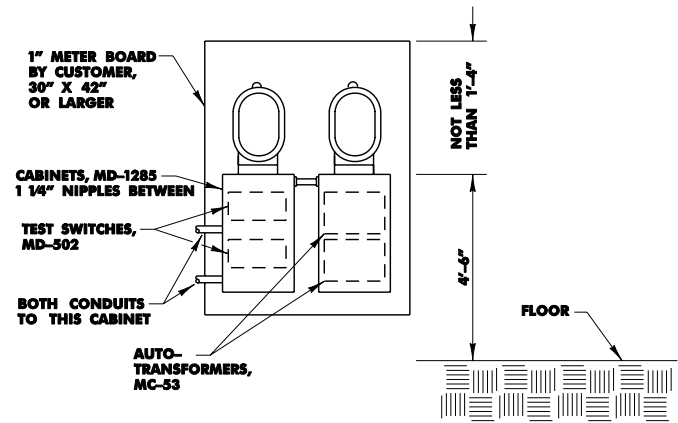
FOR USE WITH INSTRUMENT TRANSFORMERS
KW AND KVA - THREE PHASE THREE WIRE DELTA

4.06.12

M392D



NOT FOR NEW CONSTRUCTION



NOTES:

CUSTOMER TO FURNISH AND INSTALL "NATIONAL ELECTRICAL CODE" GRADE STEEL CABINETS OF ADEQUATE SIZE FOR THE INSTRUMENT TRANSFORMERS AND ALL WIRING CONNECTIONS.

CUSTOMER TO FURNISH AND INSTALL SEPARATE 1" CONDUITS FROM EACH INSTRUMENT TRANSFORMER CABINET TO METER TEST CABINET.

PHASE ROTATION AT THE METER MUST BE 1-2-3 BY TEST.

FOR LUG CONNECTIONS ON CURRENT TRANSFORMERS UP TO 600 AMPERES MINIMUM BOLT SIZE 3/8" OVER 600 AMPERES MINIMUM BOLT SIZE 1/2".