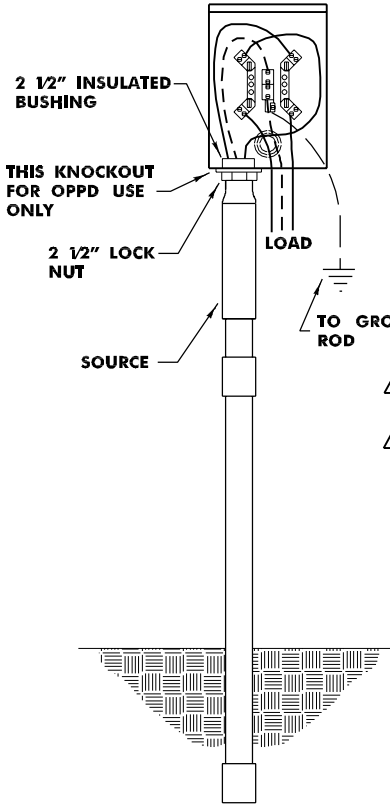


SURFACE TYPE METER SOCKET

**120/240 VOLT 3 WIRE 200 AMPERE UNDERGROUND SERVICE
"RESIDENTIAL SERVICE ONLY"**

7.05.1

M118, M118D
120/208V 1Ø 3W: M218, M218D



NOTES:

TERMINALS FOR MAXIMUM 350 KCMIL COPPER OR ALUMINUM CONDUCTOR.

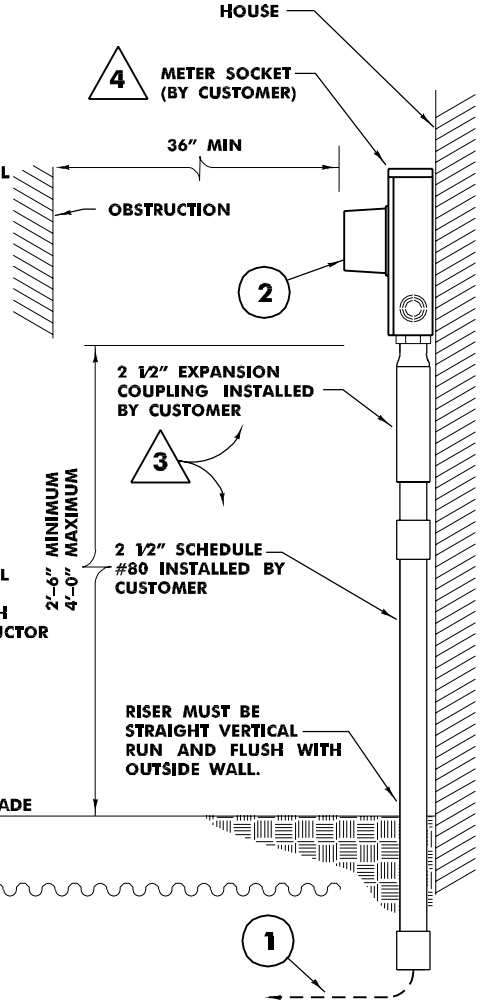
METER SOCKET AVAILABLE WITH FIFTH TERMINAL, FOR THREE WIRE 120/208 SERVICE AT 9 O'CLOCK POSITION ONLY.

PATH FOR SERVICE CONDUCTORS MUST BE CLEAR OF OBSTRUCTION AND AT FINAL GRADE BEFORE INSTALLATION OF SERVICE.

AFTER ENTRANCE EQUIPMENT IS INSTALLED CALL ACCOUNT SERVICES AT 536-4155 OR OPPD'S AREA OFFICE FOR CABLE INSTALLATION.

5 150 FT MAXIMUM RUN.

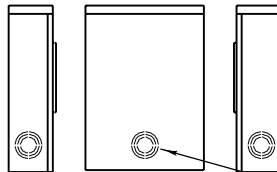
6 A GROUND ROD (NEC SUPPLEMENTAL GROUND) MUST BE INSTALLED 6" TO THE SIDE OF THE METER SOCKET WITH AN EQUIPMENT GROUNDING CONDUCTOR RUNNING FROM THE GROUND ROD TO THE GROUNDING LUG PROVIDED IN THE METER SOCKET.



OPPD SOURCE MAY USE RIGHT OR LEFT KNOCKOUT BASED ON SITE CONDITIONS.

KNOCKOUT LOCATION

LEFT VIEW FRONT VIEW COVER OFF RIGHT VIEW



BOTTOM VIEW



2 1/2" MAX KNOCKOUTS FOR OPPD'S CABLE

CONTRACTOR MUST USE THE KNOCKOUTS DESCRIBED BELOW FOR THE LINE AND LOAD CONDUCTORS. DO NOT USE ANY OTHER KNOCKOUT OR DRILL ANY OTHER HOLES IN THE METER SOCKET. KNOCKOUT LOCATIONS ON DRAWING ARE APPROXIMATE AND NOT DRAWN TO SCALE. MIDDLE BOTTOM KNOCKOUT NOT TO BE USED FOR RISER FOR OPPD CABLE.

ANY PROPOSED REQUESTS TO USE OTHER KNOCKOUTS REQUIRES PRIOR APPROVAL BY OPPD.

2 1/2" MAX KNOCKOUTS FOR CONTRACTOR'S LOAD CONDUCTORS.

KNOCKOUTS FOR CONTRACTOR'S EQUIPMENT GROUNDING. INSTALL GROUND ROD 6" OFF TO SIDE OF SOCKET.