

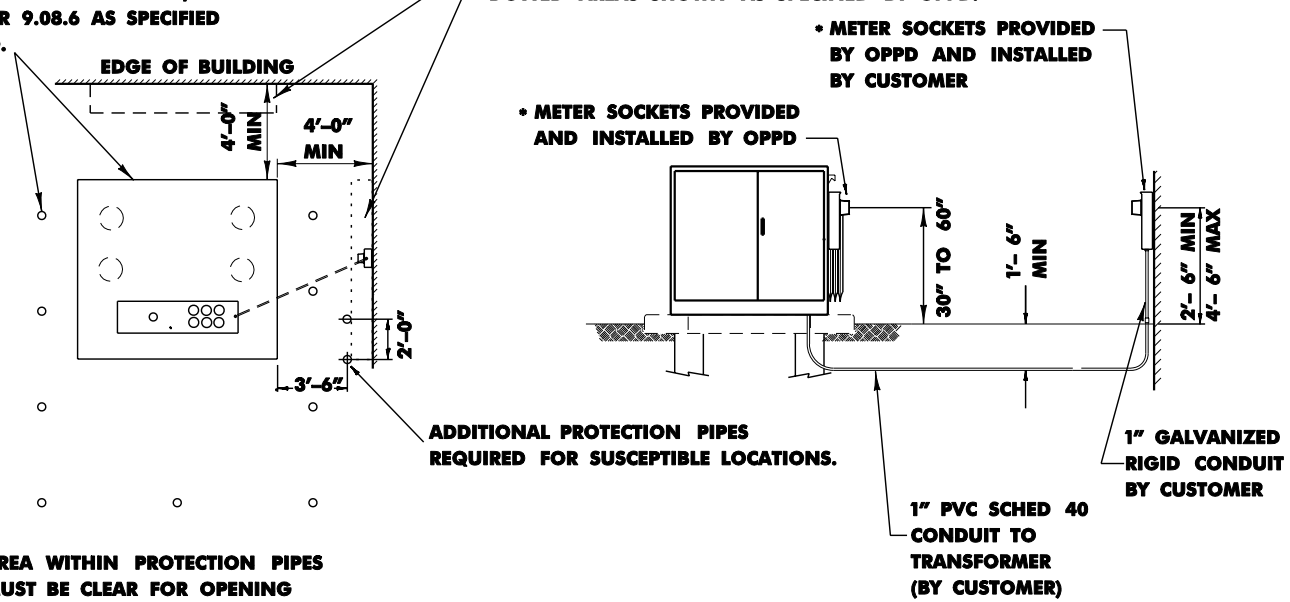
3Ø PADMOUNT TRANSFORMER

METERING EQUIPMENT ON TRANSFORMER

STD 8.08.8

TRANSFORMER SLAB AND PROTECTION PIPES BY CUSTOMER PER METER SPEC MANUAL PAGE 9.08.4, 9.08.5 OR 9.08.6 AS SPECIFIED BY OPPD.

IF CUSTOMER BUILDING IS WITHIN 10' OF TRANSFORMER SLAB, METER SOCKETS MAY BE INSTALLED ON BUILDING ANYWHERE WITHIN DOTTED AREAS SHOWN AS SPECIFIED BY OPPD.



• METER SOCKETS PROVIDED BY OPPD AND INSTALLED BY CUSTOMER

• METER SOCKETS PROVIDED AND INSTALLED BY OPPD

ADDITIONAL PROTECTION PIPES REQUIRED FOR SUSCEPTIBLE LOCATIONS.

AREA WITHIN PROTECTION PIPES MUST BE CLEAR FOR OPENING OF TRANSFORMER DOORS AND MAINTENANCE.

REFER TO DWGS:
 120/208V 3Ø 4W OR 277/480V 3Ø 4W: 4.06.15
 4.06.17
 480V 3Ø 4W: 4.06.9
 4.06.11

REFER TO DWGS: 8.08.1 THROUGH 8.08.6 FOR SLAB DETAILS

NOTES:

- A MINIMUM CLEAR WORKING SPACE OF 2.5 FT ABOVE, BELOW, AND NECESSARY SIDE WORKING CLEARANCE, AS WELL AS 36" HORIZONTALLY IN FRONT OF THE METERING, SHALL BE PROVIDED AND MAINTAINED.

METERING ON TRANSFORMER IS FOR ONLY WITH INSTRUMENT TRANSFORMERS MOUNTED INSIDE PADMOUNTED TRANSFORMER AND METER MOUNTED ON PADMOUNT TRANSFORMER OR ON BUILDING WALL. AEOT IS FOR NEW CONSTRUCTION ONLY, UNLESS EXISTING SERVICE ENTRANCE CABLES ARE REPLACED.