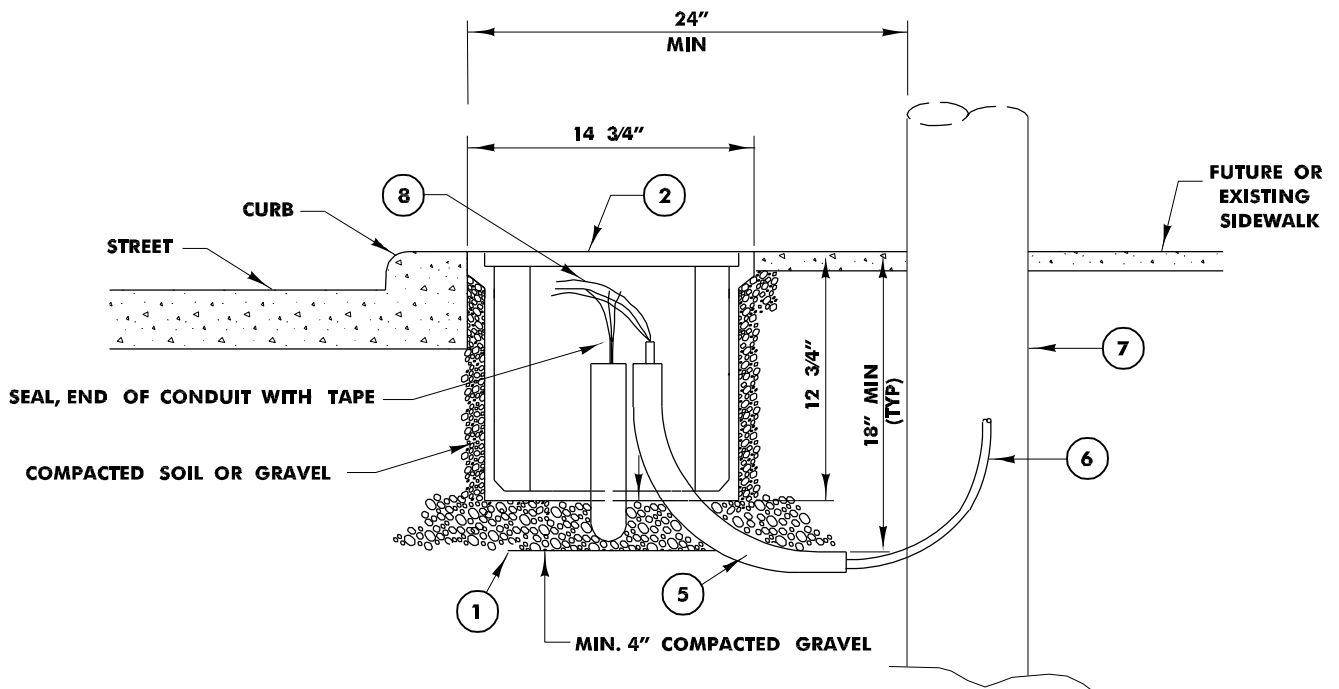
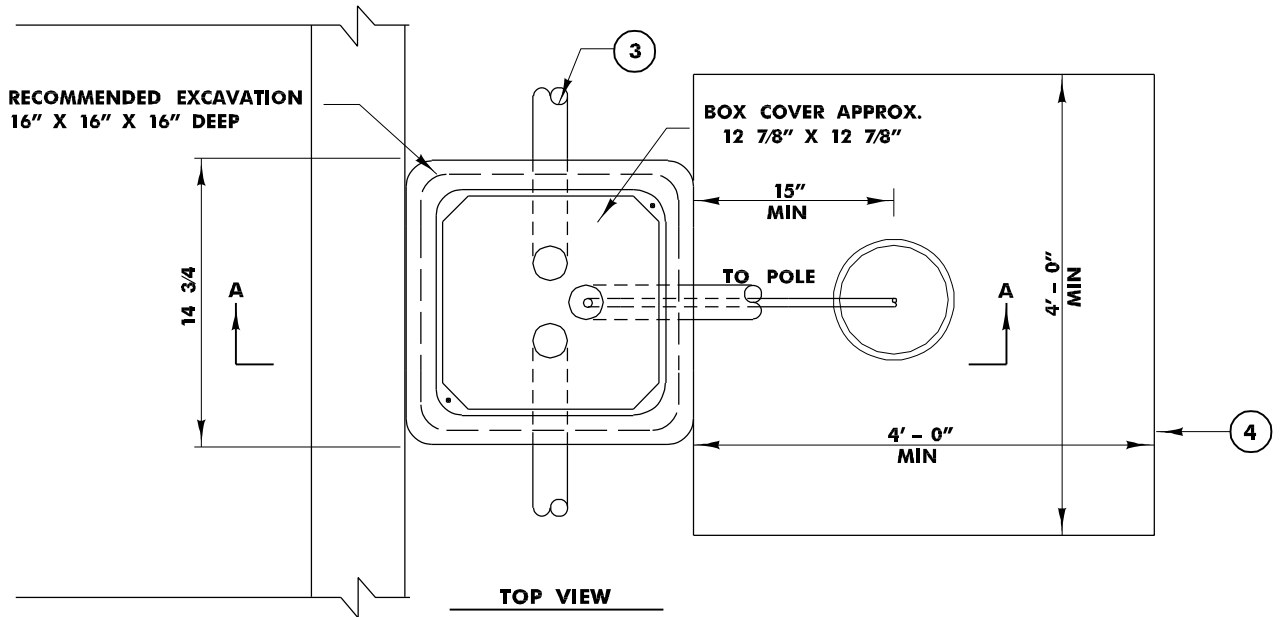


CUSTOMER INSTALLED STREET LIGHT CONDUIT & PULLBOX IN AREAS OF REDEVELOPMENT

0.01.1



NOTES:

1. CUSTOMER TO COMPACT A MINIMUM OF 4" OF GRAVEL.
2. CUSTOMER TO INSTALL PULL BOX WITH LID (TO BE PROVIDED BY OPPD).
3. CUSTOMER TO INSTALL 2" PVC SCHEDULE 40 CONDUIT AT MIN. DEPTH OF 18" TO TOP OF CONDUIT, AND USE 18" RAD. BENDS INTO PULL BOX (ALL PROVIDED BY OPPD). CUSTOMER IS RESPONSIBLE FOR INSTALLING A PULL LINE IN THE CONDUIT.
4. CUSTOMER TO LEAVE A 4' X 4' OPENING IN SIDEWALK, CENTERED BEHIND PULL BOX.
5. CUSTOMER TO INSTALL 2" PVC SCHEDULE 40 18" RAD. BEND. TAPE END & MARK WITH CAUTION TAPE AND STAKE AT END OF BEND.
6. OPPD TO INSTALL 1 1/2" BLACK HDPE SCHEDULE 40 CONDUIT BETWEEN PULL BOX AND BASE OF STREET LIGHT POLE.
7. OPPD TO INSTALL STREET LIGHT POLE AT A MINIMUM DISTANCE OF 15" FROM EDGE OF PULL BOX TO CENTER OF POLE.
8. OPPD TO PULL STREET LIGHT CONDUCTOR (AND HOLIDAY LIGHT CIRCUIT) THROUGH CONDUITS AND MAKE TERMINATIONS IN PULL BOX AND STREET LIGHT POLE.