



# NOS Outreach & Engagement

*February 2023 Update*



# Objective

- Per the edited and approved Resolution 6518, OPPD's Board of Directors cited that OPPD's continued outreach should ...

*“Engage with local educational, public health, and community-led organizations in carrying out the process that includes engaging the North Omaha community in understanding the benefits and developing action plans to reduce overall impacts related to ongoing operations at North Omaha Station for residents.”*

# Phases



## Phase I (pre-August vote)

Inform and communicate local, regional and national challenges and changes to the electrical system landscape.

Various, internal communications, external 1:1s, videos, industry articles, Speakers Bureau, website education, FAQs, etc.

## Phase II (Aug-Dec)

Engage with, consult and listen to local educational, public health, and community-led organizations.

Listening tour, data collection, employee community connections and retiree outreach, LB1024 hearings, NOS plant tour and community leader conversations.

## Phase III (Jan-TBD)

Output of listening phase – plan to be developed based on feedback.

Likely to include continued engagement with LB1024 implementation and the North O business park, product development & marketing engagement, community conversation and events.

# Broader Engagement (to date)

- January 6: Empowerment Network – Community Leaders
- January 13: Sierra Club Meeting
- January 14: Empowerment Network – Community Meeting
- January 27: Citizens Climate Lobby (CCL)
- January 28: State of North Omaha Meeting
- February 2: Miller Park Minne Lusa Neighborhood Association Meeting
- Other: OPPDCommunityConnect, outreach to neighborhood associations and churches in closest proximity



## North Omaha Station Extension

In August 2022, OPPD's Board voted to extend current energy asset practices at North Omaha Station.

# Lessons Learned

- Make the Invisible, Visible... We need to solve for how we elevate and communicate the work that happens every day
- Communicate the day-to-day trust building and partnerships that aren't seen in a monitoring report
- Deeper conversations have helped us understand holistic wellbeing of the community
- Many did not know that North Omaha Station units 1, 2 and 3 were taken off coal in 2016
- Interests are broad ranging from public safety to prosperity to public policy (grants, LB1024, etc.) to health
- Multiple outreach approaches, from 1:1s to OPPDCommunityConnect.com
- Connect this strategy to Powering the Future 2050
- Navigate special interest group agendas, as to not overshadow the needs of the community



# Themes

## Community Development

### OPPD Role: Partner

Work side-by-side with elected officials, area organizations and businesses to ensure a thriving community.

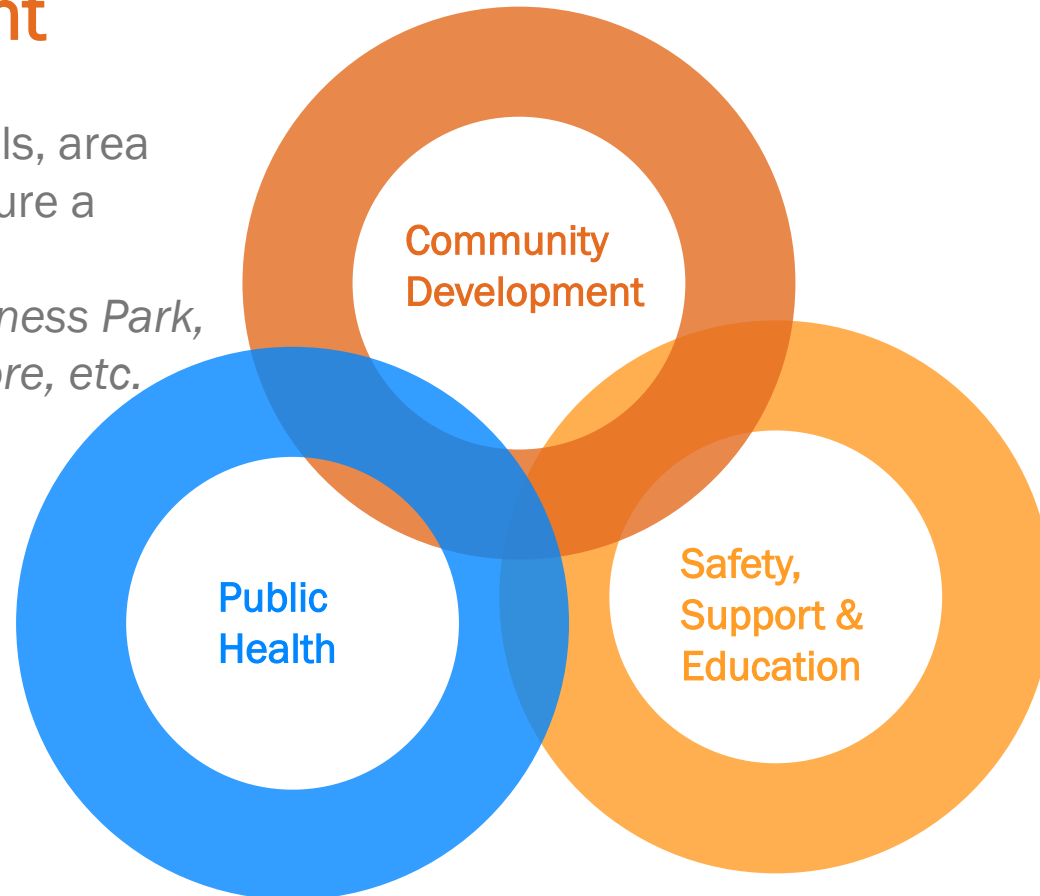
- *i.e. LB1024, redevelopment, Business Park, workforce development, Urban Core, etc.*

## Public Health

### OPPD Role: Supporter

Per Resolution, understand and support public health programs and community needs.

- *How do we measure the holistic wellbeing of a community?*
- *OPPD impacts to Social Determinants of Health*



## Safety, Support & Education

### OPPD Role: Collaborator, Connector, Owner/Partner

Listen, learn and launch events, education and programs that are unique to the communities we serve.

- *Safety: outages, trees, streetlights*
- *Support: volunteerism, non-profit and school programs*
- *Education: solar, rates, energy efficiency and assistance, sustainability, speakers bureau, etc.*

# Social Determinants of Health

Social determinants of health (SDOH) are the conditions in the environments where people are born, live, learn, work, play, worship, and age that affect a wide range of health, functioning and quality of life outcomes and risks.



# The Impacts

## Social Determinants of Health

### *Economic Stability*

Help people earn steady incomes that allow them to meet their health needs.

### *Education Access & Quality*

Increase educational opportunities and help children and adolescents do well in school.

### *Health Care Access and Quality*

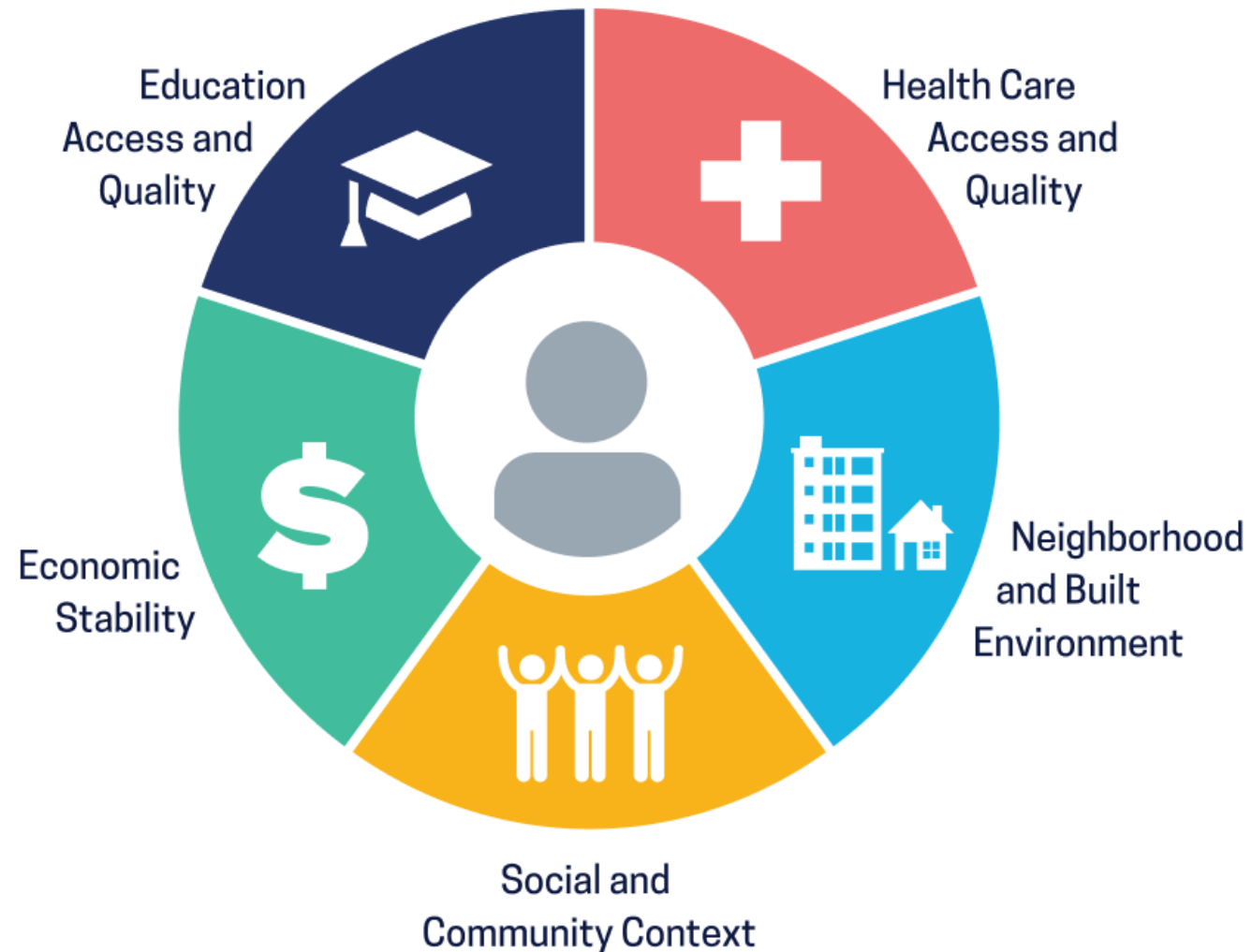
Increase access to comprehensive, high quality health care services.

### *Neighborhood and Built Environment*

Create neighborhoods and environments that promote health and safety.

### *Social and Community Context*

Increase social and community support.



Social Determinants of Health

Copyright-free

 Healthy People 2030



# Broader Engagement (upcoming)

- February 18: NAACP
- February 21: OPPD-sponsored Community Conversation
- February 27: North Omaha Commercial Club Meeting



Join us for a Community  
Conversation about  
North Omaha Station

Tuesday, Feb. 21, 5:30 p.m.  
*Details available at*

[OPPDCommunityConnect.com](http://OPPDCommunityConnect.com)



# Next Steps

- Utilize feedback from broader engagement to help prioritize need and identify/validate partnerships
- Develop, refine and provide recommendations on potential opportunities going forward
- Give appreciation for so many outreach efforts and input we received from the community leaders and circle back on an update so they know how their input contributed

