

AMI Program Update

Presenter: Aaron Smith - Director of
Distributed Device Strategy

AGENDA

- AMI ecosystem
- Launch benefits
- Progress
- Partner support
- Upcoming

Powering the Future to 2050

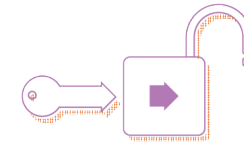
5 YR PRIORITIES

- Resource Adequacy
- Technology Transformation & Investment
- Two-way Communication & Engagement
- Master Facilities Plan

LONG-TERM VISION



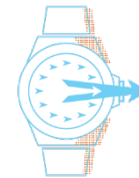
Perfect
Power



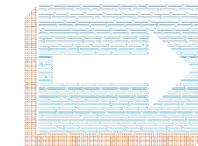
Customer
Freedom



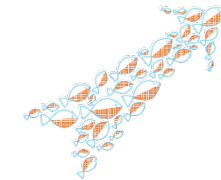
Cleaner
World



Future Ready
Posture

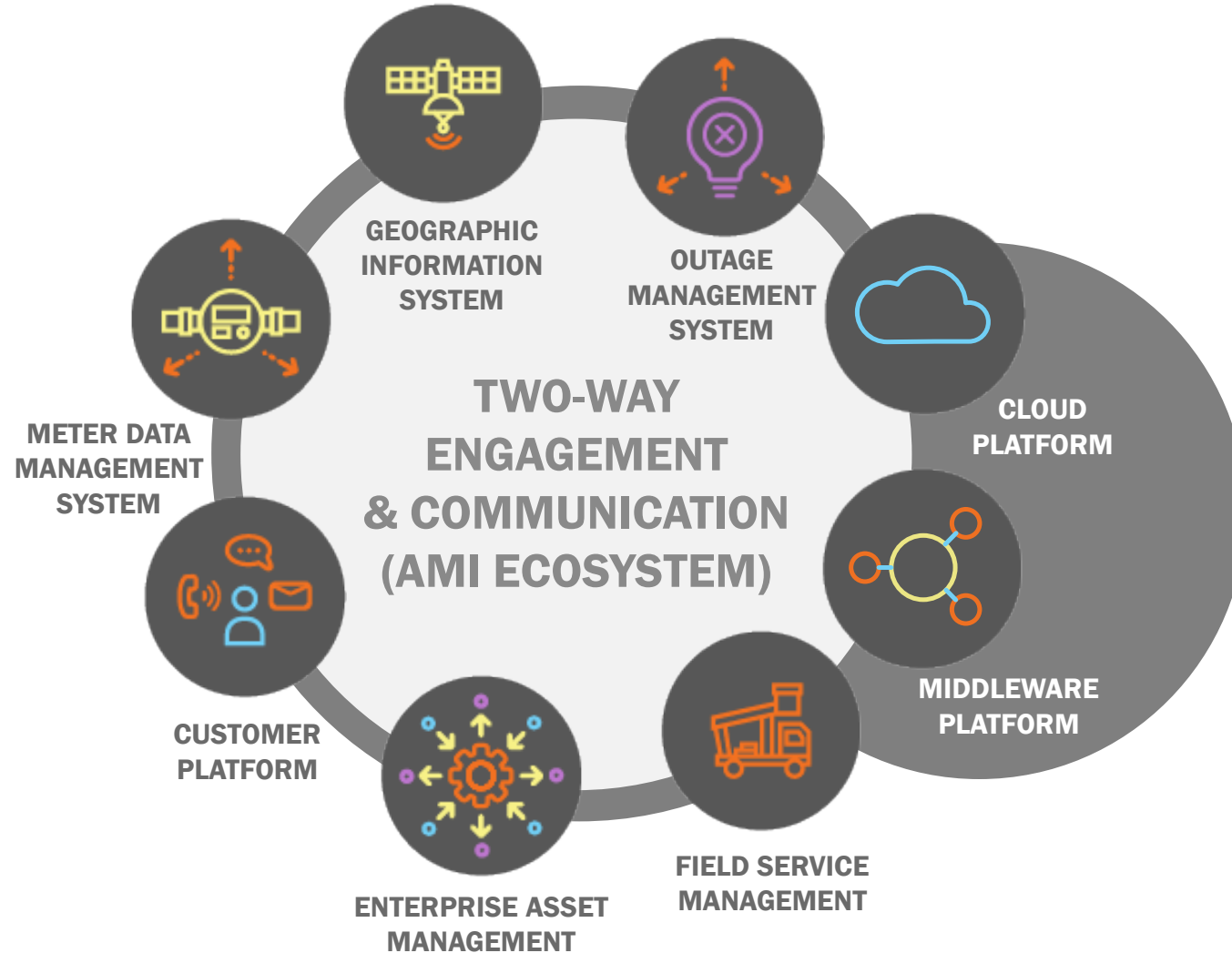


Digitally
Driven



Purpose
Driven Culture

AMI Transformation



Primary Benefits

Customers

Better outage information, including outage map and text alerts

Detailed energy usage data to help customers make informed decisions that could save them money and reduce energy use

Improved self-service for accessing account

OPPD

Modernize distribution operations

Mature project and change management capabilities

Operate with leading utility practices

Enable technology that will make OPPD more agile in future

Long-term possibilities

Self-healing grid w/ automated devices

Distributed resource integration

EV enablement and integration

More visibility into asset health and improved asset management district-wide

\$30 – 50M net benefit in increased productivity, better grid control, more effective operations (over 20-year life)

Primary Risks

Schedule

Cost

Technology
Adoption

Data Governance

Vendor / Partner
Management

Business Process
Change

Progress

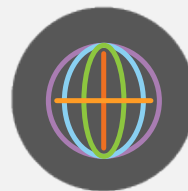
CHANGE MANAGEMENT

- Identified vendor and internal support
- Analyzing process changes
- Communicating program vision
- Developing change and communication plan



PROGRAM MANAGEMENT

- Created governance for clear decision-making and alignment
- Determining the key functionality needed now
- Aligning projects for launch and risk management



AMI TRANSFORMATION ORGANIZATION

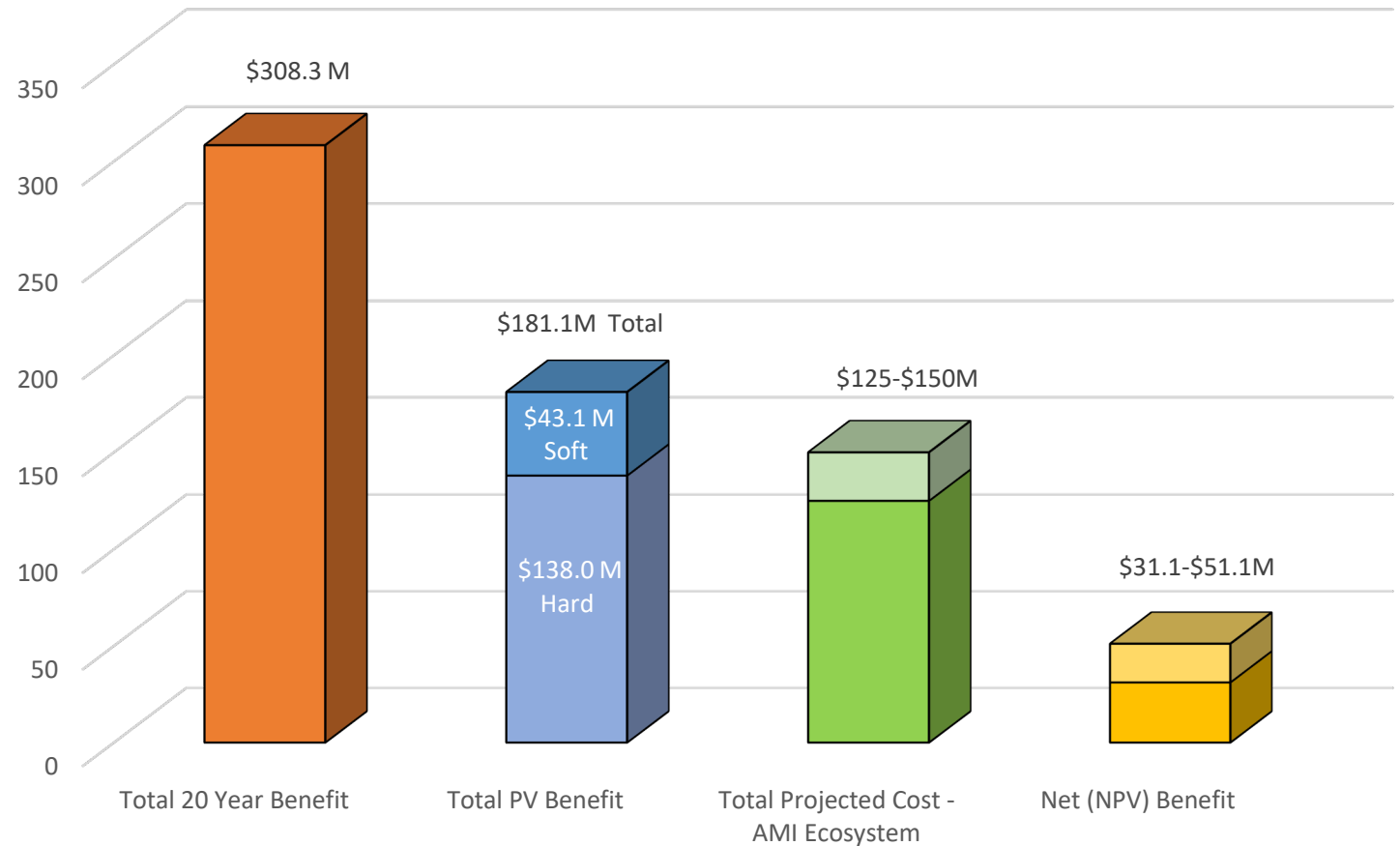
- Launched AMI accelerator
- Posting and hiring roles to support startup and long-term AMI vision
- Craft professionals with technical staff



Business Case Summary

Benefit Categories	
Remote On/Off	Volt/Var Optimization
Reduced Meter Readings	Avoided Meter Replacement
Reduction in "No Trouble Found" calls	Reduced Capital Spend on Dist. System
Reduced Bad Debt	Outage Restoration
Revenue Assurance	Greenhouse Gas Reduction
Load Curtailment	Dynamic Pricing – TOU Rates
Customer Notifications	Momentary Outage & PQ Monitoring

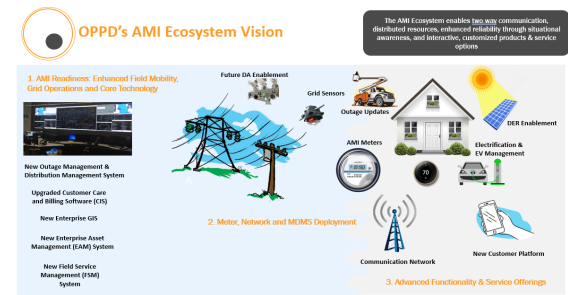
Figure 1 Projected AMI Benefit



Soft Benefits = Efficiency Gains & Customer Benefits

Hard Benefits = Cost & Revenue Benefits

Key Decisions



	esri [™]	OSI	SEW	IBM maximo		Landis+Gyr manage energy better
	Geographic Information System	Outage Management System	Field Service Management	Enterprise Asset Management	Customer Platform	AMI Meters & MDMS
Vendor	ESRI	OSI	SEW	Maximo	TBD	Landis & Gyr
Initial Deployment	2024	2025	2025	2025	2025	2025--2028

Partner Ecosystem



Diversity of partners mitigates risk.

Business integrator: Manages process and people change

System integrator: Implements and ensures technical systems work together

Product vendors: Provide applications and equipment (meters)

OPPD: Provides vision, oversight, decision-making and alignment for OPPD needs

Upcoming Milestones

