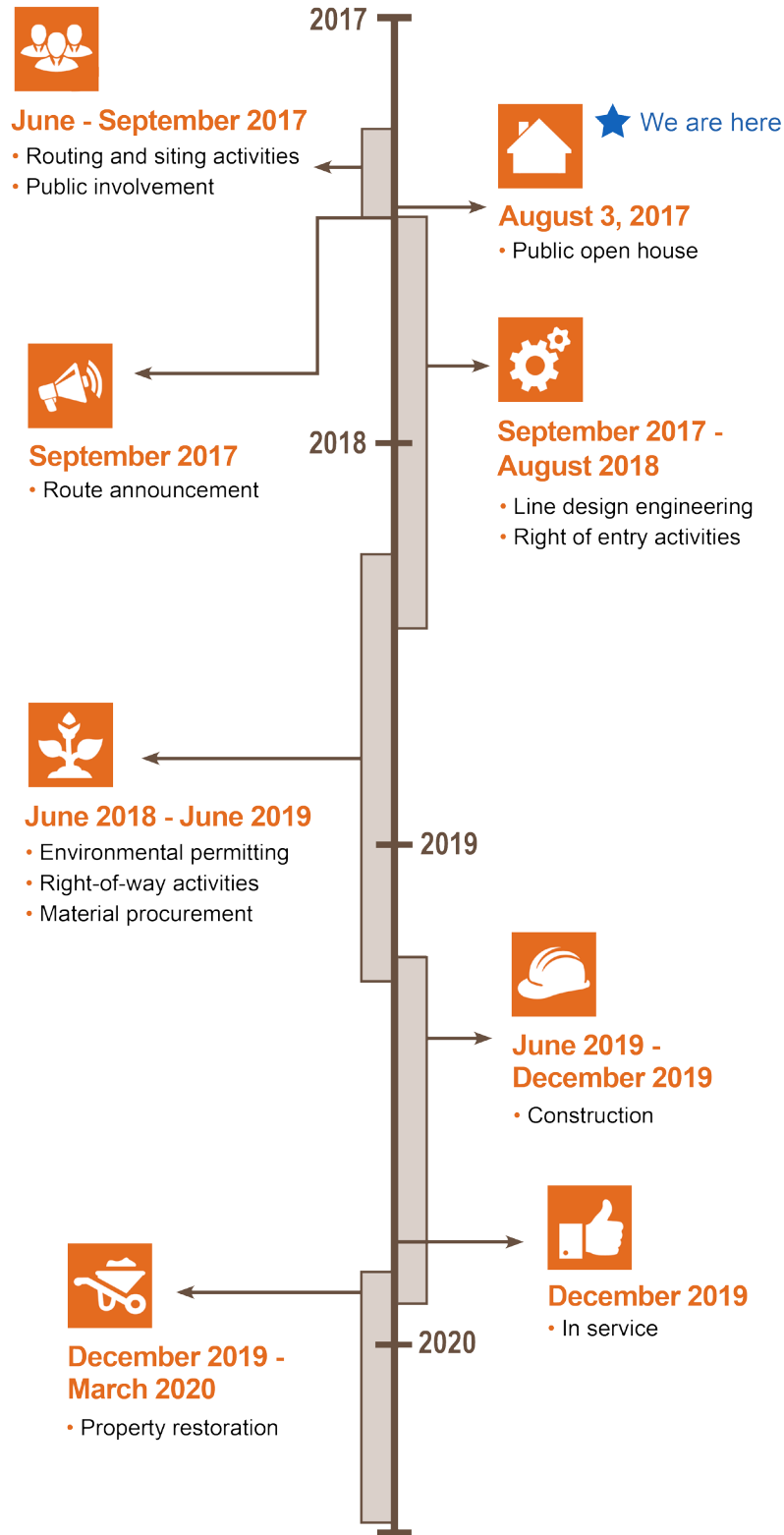


## PROJECT SCHEDULE



## ROUTING PROCESS

Information gathered throughout the routing process provides valuable insight regarding properties, constraints and opportunities, and impacts to landowners. We are appreciative of all landowners for their cooperation throughout this process.

## ROUTING CRITERIA

Stakeholder input will be combined with the following criteria to determine the most appropriate and responsible transmission line route:

- Airports and airstrips
- Federal and state lands
- Schools
- Businesses
- Floodplains
- Structures
- Cemeteries
- Highways
- Threatened and endangered species
- Churches
- Historic and archaeological sites
- Wetlands/waterways
- Conservation areas
- Irrigation systems/center pivots
- Wooded areas
- Constructability
- New and platted developments
- Visibility of the line
- Cost
- Railroads
- Existing/planned utilities
- Residences/homes

# SARPY TRANSMISSION PROJECT



## PROVIDING THE PATH TO NEW DEVELOPMENT

**Omaha Public Power District takes great pride in meeting the energy needs of today, while planning and preparing for the needs of the future.**

Papillion, Sarpy County and the entire greater Omaha area are currently experiencing commercial, industrial and residential growth. As your energy partner, we continue to invest in the communities we serve to support growth and opportunities in the region – all while meeting our commitment to no general rate increase through 2021.

To support this growth, OPPD plans to construct a new overhead high-voltage transmission line. The new line would extend from OPPD's Substation 1255, located near 114th and Giles Road in Papillion, to Substation 1260, located near 144th and Schram Road in Papillion.

### Project Benefits

- Provide the necessary capacity and reliability to support new and expanding businesses as well as residential growth
- Support OPPD's commitment to no general rate increase through 2021

### OPPPO Stakeholder Commitment

- Listen, understand and appreciate your issues and concerns
- Partner and build relationships
- Educate and engage you on important utility matters
- Mutual trust and respect
- Transparency and honesty
- Communication and collaboration

### NEED MORE INFORMATION OR HAVE COMMENTS?

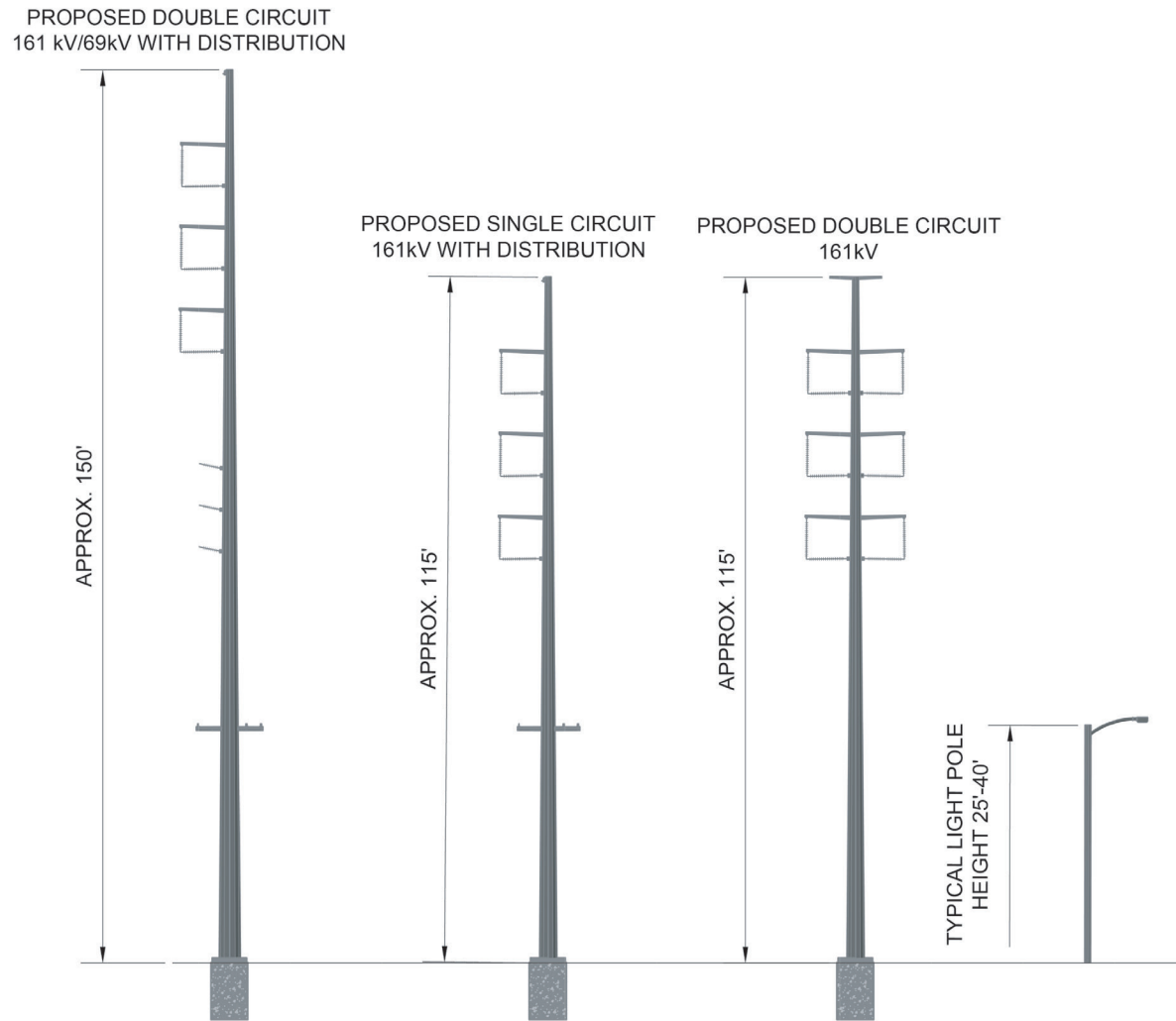
 oppdlistens.com

 402-636-3062





# TYPICAL TRANSMISSION STRUCTURE



## TYPICAL STRUCTURE MEASUREMENTS

**STRUCTURE** | Single steel shaft transmission poles (wood distribution poles where necessary)

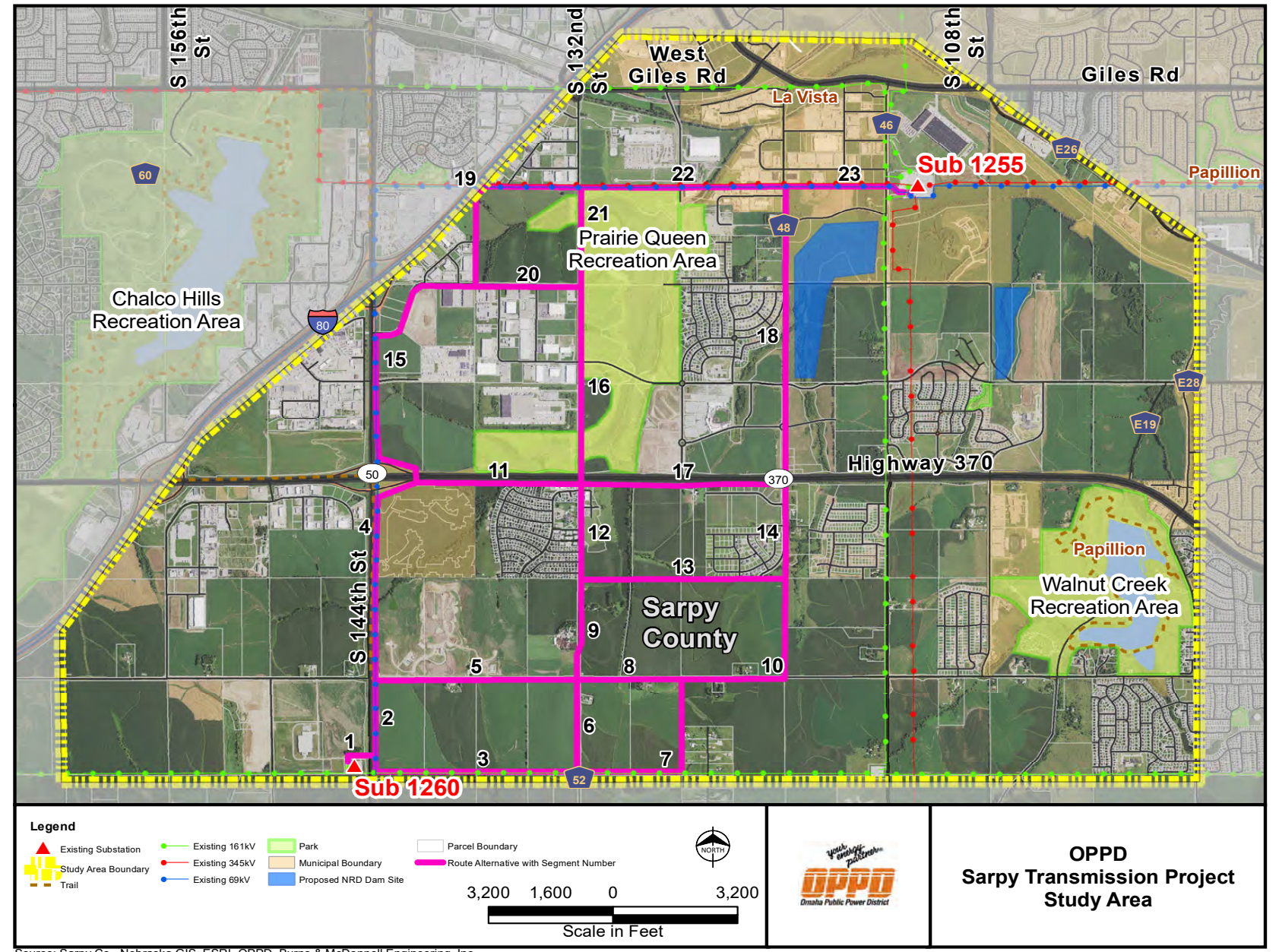
**FOUNDATION** | Concrete pier or directly embedded

**HEIGHT** | 115 – 150 feet (typical)

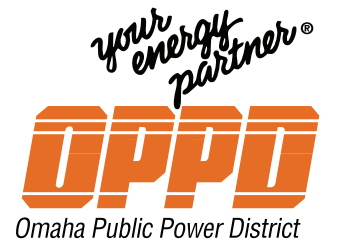
**SPAN LENGTH** | 500 feet (typical) with distribution poles in between spans where necessary

**EASEMENT WIDTH** | 40 - 100 feet for new 161-kV transmission line

# PROJECT STUDY AREA



OPPD customers living in the proposed project area, may receive a follow-up survey regarding this public engagement process.



**OPPD**  
Sarpy Transmission Project  
Study Area