

ROUTING CRITERIA

Social

Business

Cemeteries

Churches

Commercial/Industrial

Agriculture

New & Platted Developments

Schools

Residences/Homes

Parks & Recreation

Environmental

Conservation Areas

Federal & State Lands

Floodplains

Historic & Archaeological Sites

Wooded Areas

Wetlands/Waterways

T&E

Threatened & Endangered Species

Engineering

Airports & Airstrips

Cost

Constructability

Highways

Railroads

Structures (Other)

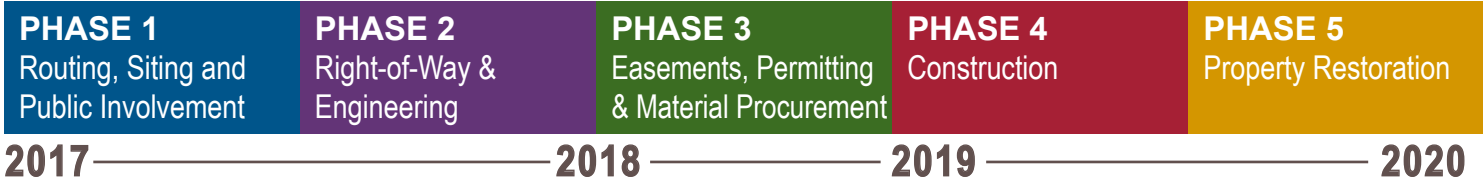
Irrigation Systems/Pivots

Existing/Planned Utilities

Wells

PROJECT PHASES & STAKEHOLDER FEEDBACK

Stakeholder feedback will be collected after each phase of the project.



ROUTING KEY CRITERIA

- Stakeholder input:
- Maximize distance from homes
  - Minimize number of private properties affected
  - Maximize distance from schools, parks, churches, cemeteries, etc.

96%

RESPONDENTS BELIEVE THE NEED FOR THIS PROJECT WAS EXPLAINED ADEQUATELY

SARPY TRANSMISSION PROJECT



September 2017

PROVIDING THE PATH TO NEW DEVELOPMENT

Omaha Public Power District takes great pride in meeting the energy needs of today, while planning and preparing for the needs of the future.

Papillion, Sarpy County and the entire greater Omaha area are currently experiencing commercial, industrial and residential growth. As your energy partner, we continue to invest in the communities we serve to support growth and opportunities in the region – all while meeting our commitment to no general rate increase through 2021.

To support this growth, OPPD plans to construct a new overhead high-voltage transmission line. The new line would extend from OPPD’s Substation 1255, near 114th and Giles Road in Papillion, to Substation 1260, near 144th and Schram Road in Papillion.

- Project Benefits
- Provide the necessary capacity and reliability to support new and expanding businesses, as well as residential growth
  - Support OPPD’s commitment to no general rate increase through 2021



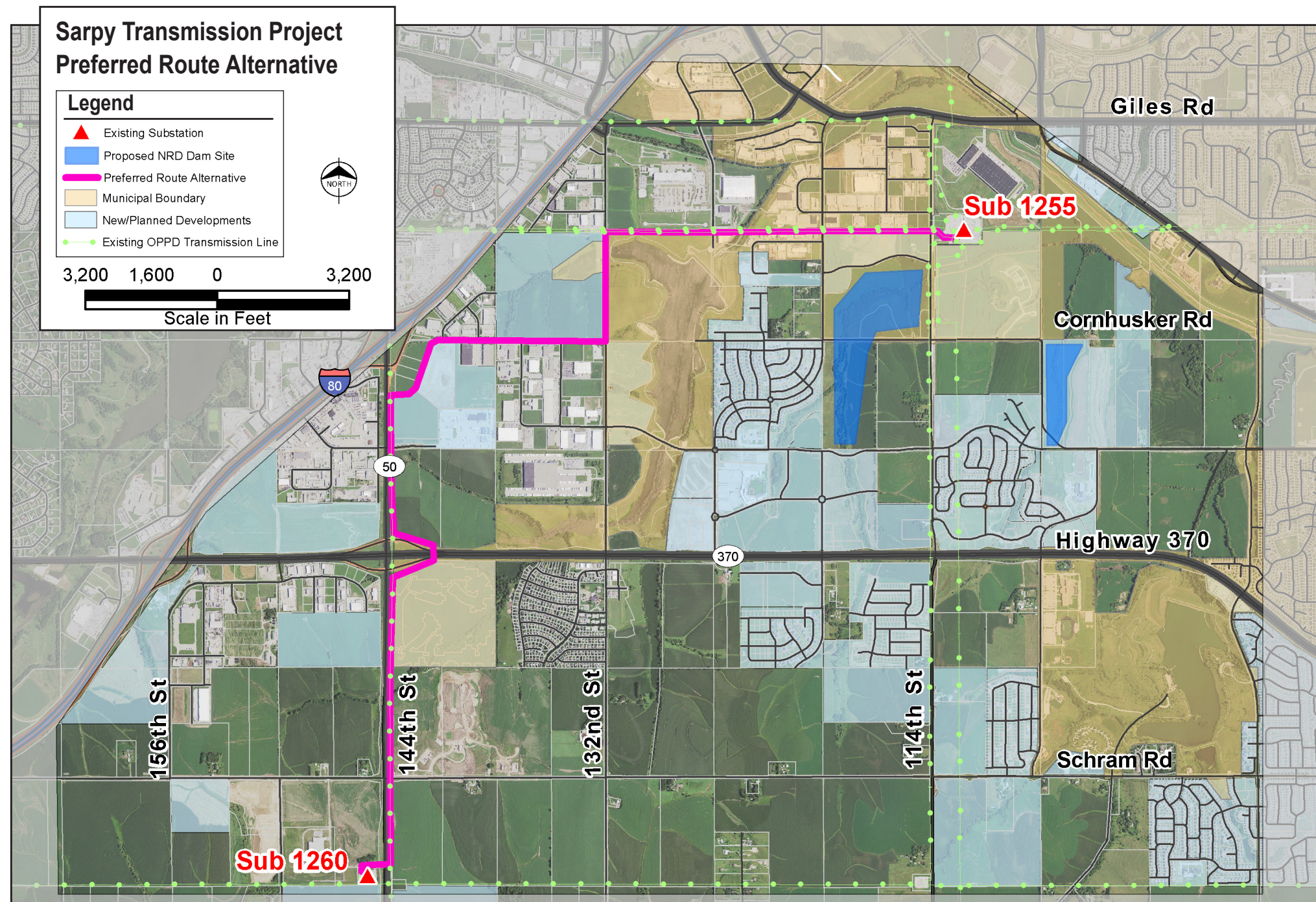
NEED MORE INFORMATION OR HAVE COMMENTS?

oppdlistens.com

402-636-3062

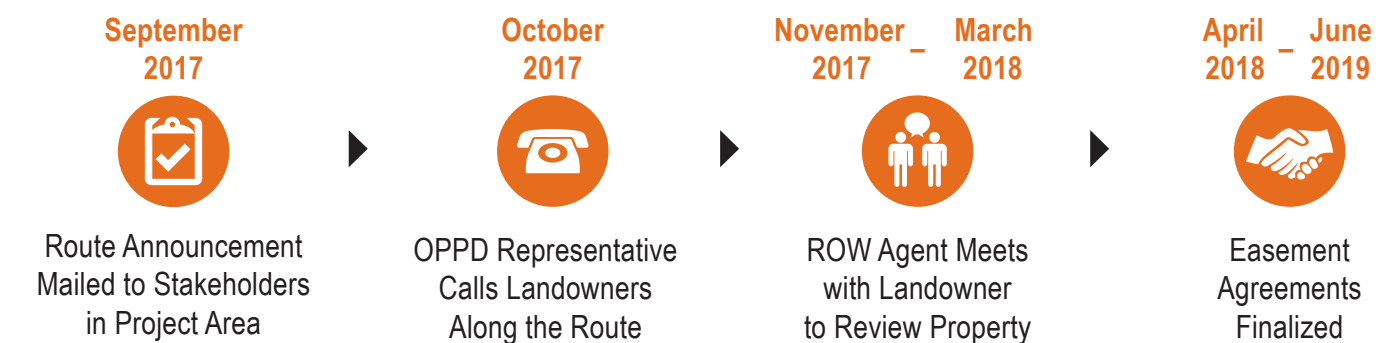






## Next Steps

### RIGHT-OF-WAY ACQUISITION PROCESS



## PROJECT SCHEDULE

