

Quick Facts

Data as of Dec. 31, 2017

Our mission

Provide affordable, reliable and environmentally sensitive energy services to our customers.

Company highlights

- Operating since 1946
- Publicly owned
- Governed by elected board
- Headquartered in Omaha, Neb.
- Serves 833,000 people in 13-county, 5,000-square-mile area
- 12th-largest public power utility in U.S. per number of customers

Numbers that make cents

Generating capability
2,645.7 megawatts (MW)

System peak load
2,426.9 MW

Total utility plant
\$4,350,603,000

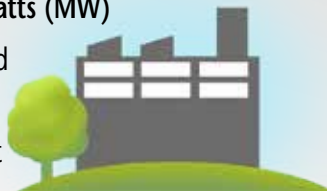
Megawatt-hour sales
16,319,136 MWh

Miles of electric line
15,947

Payments in lieu of taxes
\$33,989,000

Capital expenditures
\$99,618,000

Operating revenue
\$1,104,301,000



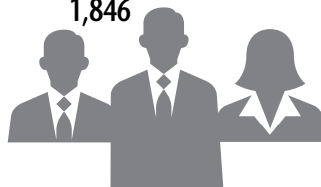
Average number of electric customers

374,831



Number of employees

1,846



Average cost per kilowatt-hour (kWh) – residential

11.49 cents

Average annual use – residential

10,859 kWh



Renewables for 2017

percentage of retail sales

Wind	29.5%
Hydro	3.6%
Landfill gas	0.4%
Total	33.5%

OPPD rates are below the national average.*

RESIDENTIAL	COMMERCIAL	INDUSTRIAL	RETAIL
10.9%	17.3%	8.5%	15.4%
BELOW	BELOW	BELOW	BELOW

*According to preliminary December 2017 figures from the Energy Information Administration

Public power works for you

Nebraska is the only state in the U.S. whose residents get their electricity almost entirely from public power utilities. For more than 100 years, public power has provided benefits like:

- **Local control.** Nebraska utilities are overseen by publicly elected boards, appointed utility boards, rural cooperatives and city councils.
- **Reliability.** Public power utilities are committed to maintaining reliable service.
- **Affordability.** Public power rates are based on the cost to provide service, not the financial interests of stockholders. Low-cost power gives the OPPD service territory a competitive advantage when attracting economic development to our communities.



For more details, visit oppd.com/annualreport.

OPPD Service Area

Served at Retail
 Served at Wholesale
 Power Station*

* 2017 rated capability

