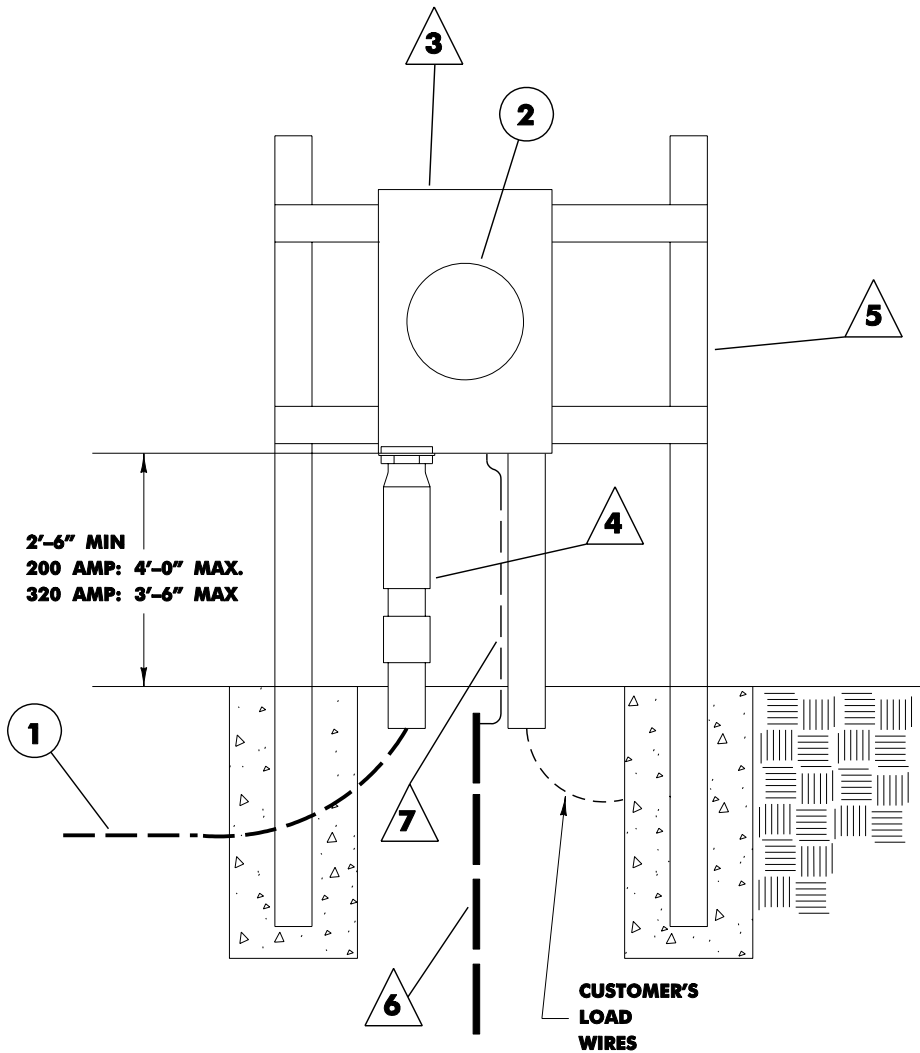


CUSTOMER'S METER SUPPORT RESIDENTIAL, UNDERGROUND

7.06

M121
M121D
120/208V 1Ø 3W: M221
M221D



NOTES:

TERMINALS FOR MAXIMUM 250 KCMIL
COPPER OR ALUMINUM CONDUCTOR.

METER SOCKET AVAILABLE WITH
FIFTH TERMINAL, FOR THREE WIRE
120/208 SERVICE.

PATH FOR SERVICE CONDUCTORS
MUST BE CLEAR OF OBSTRUCTION
AND AT FINAL GRADE BEFORE
INSTALLATION OF SERVICE.

AFTER ENTRANCE EQUIPMENT
IS INSTALLED CALL ACCOUNT
SERVICES AT 536-4155 OR
OPPD'S AREA OFFICE FOR
CABLE INSTALLATION.

150 FT MAXIMUM RUN.

A GROUND ROD (NEC SUPPLEMENTAL
GROUND) MUST BE INSTALLED
NEAR THE METER SOCKET WITH
AN EQUIPMENT GROUNDING
CONDUCTOR RUNNING FROM THE
GROUND ROD TO THE GROUNDING
LUG PROVIDED IN THE METER SOCKET.

SOURCE AND LOAD CONDUIT CAN BE
INTERCHANGED BY PRIOR APPROVAL
ONLY. DETAILS ON CHANGES TO THIS
DRAWING WILL BE GIVEN WHEN
APPROVAL IS GRANTED.

SEE DWG: 7.05.1 FOR ACCEPTABLE
CONDUIT KNOCKOUT LOCATIONS
IN SOCKET.