

*Moody/Focht*

**ACQUISITION OF PROPERTY RIGHTS  
FOR UTILITY OPERATIONS INFRASTRUCTURE PROJECTS**

**RESOLUTION NO. 6673**

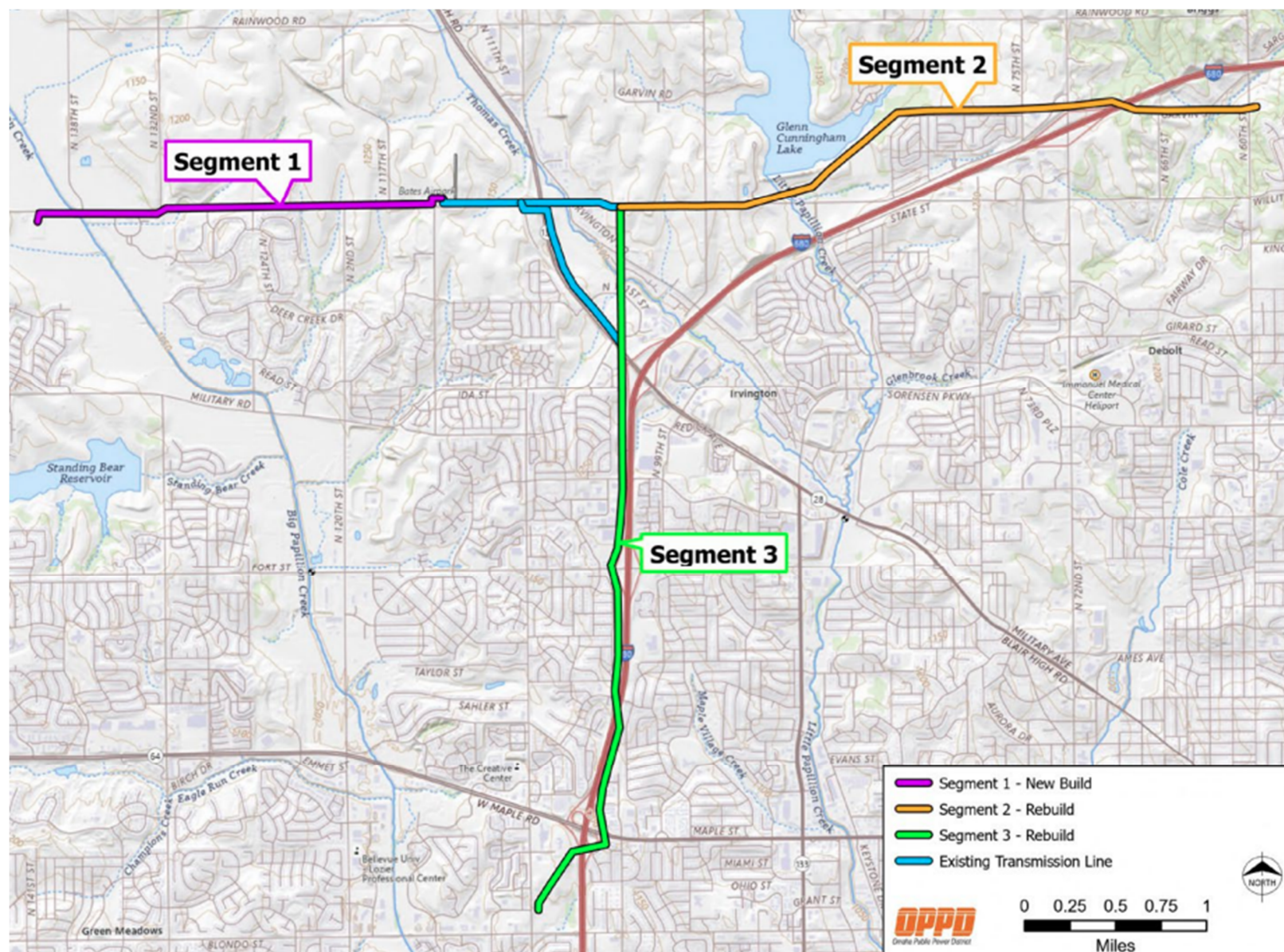
**WHEREAS**, the District will need to acquire all necessary permanent and temporary easements as needed along the three line segments of the North Douglas County Transmission Project to support load growth and reliability in the northern Douglas County area; and

**WHEREAS**, the District is authorized by Nebraska law to acquire property and easements by eminent domain; and

**WHEREAS**, the use of eminent domain may become necessary to acquire the permanent or temporary easements that cannot be obtained voluntarily through negotiations by the District.

**NOW, THEREFORE, BE IT RESOLVED** by the Board of Directors of the Omaha Public Power District that Management and the District's General Counsel are authorized by the Board of Directors to commence eminent domain proceedings for all necessary permanent and temporary easements as needed on parcels not acquired voluntarily after all reasonable efforts have been made, with this authorization extending through the duration of the North Douglas County Transmission Project.

## NORTH DOUGLAS COUNTY TRANSMISSION PROJECT ROUTE MAP







# North Douglas County Transmission Project

OPPD is **constructing, expanding** and **rebuilding** its transmission network in north Douglas County in **three segments**.

## SEGMENT

**1** A new, 2.3-mile, double-circuit transmission line will be built along **State Street** between **114th** and **140th** streets.

## SEGMENT

**2** An existing double-circuit transmission line will be rebuilt between **101st & State** streets and **60th & Garvin** streets.

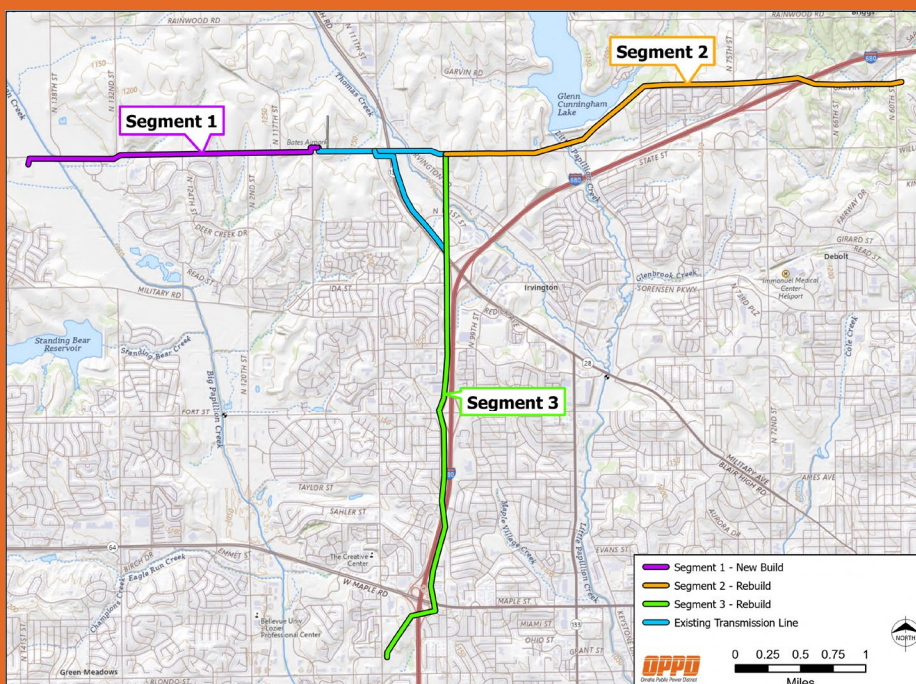
## SEGMENT

**3** An existing double-circuit transmission line along **Interstate 680** will be rebuilt from **108th & Blondo** streets to **101st & State** streets.

We promise to **keep you informed**, to **listen** and **acknowledge** your comments, and explain existing easements.

OPPD must improve its electric transmission network in north Douglas County to serve increasing customer demand for electricity across all customers, provide additional capacity for economic development, support future electrical system enhancements, and maintain reliability. Staying ahead of increasing customer demand is vital as society becomes more dependent on technology-driven energy consumption.

OPPD is experiencing unprecedented usage growth, estimated at an average of 100 megawatts a year for at least the next decade. Transmission improvements will provide more reliable and resilient power to our service territory and will enhance the power grid's ability to withstand physical and weather-related threats. The project will support new infrastructure that is part of OPPD's long-range plan for a balanced generation portfolio.



Scan the code using your smartphone or visit **OPPDCommunityConnect.com/north-douglas-county-transmission-project** to get the latest project information and updates. This interactive site also provides a place for you to comment or ask questions of our project team.



A dedicated project information line is also available by calling **402-262-0643**.

## Project Timeline

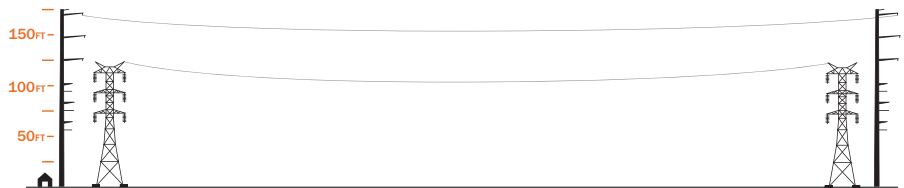
- |  |   |  |   |   |
|--|---|--|---|---|
| <b>STAGE 1</b> <b>October 2024</b><br>Project Announced<br>Open House<br>Online Presentation | <b>STAGE 2</b> <b>November 2024</b><br>Discussions begin<br>with directly affected<br>landowners<br>Field surveys begin | <b>STAGE 3</b> <b>2026</b><br>Construction<br>begins | <b>STAGE 4</b> <b>December 2026</b><br>Segment 1 complete | <b>STAGE 5</b> <b>June 2027</b><br>Segment 3 complete<br><b>December 2027</b><br>Segment 2 complete |
|--|---|--|---|---|



### Replacing Lattice Towers with Monopoles

The improved transmission network will be carried mostly on steel monopoles, which can be between 160 feet and 190 feet tall and spaced about 800 feet apart. That's more than two-and-a-half football fields between poles. They will replace lattice towers along much of the existing segments, which range from about 100 feet to 140 feet tall and are spaced about 700 feet to 1,100 feet apart.

Replacing large lattice towers with monopoles will leave a smaller footprint on properties. However, new poles may be installed during this process in places that previously did not have a pole or tower.



### Public Involvement

OPPD is experiencing a growing demand for electricity across all customers.

As part of our public power promise, OPPD is committed to informing, educating and engaging customers on projects and key business decisions.



Project Information Line  
**402-262-0643**

### Right of Way

Our team is working to minimize the right of way needed for construction, operation and maintenance of the transmission lines. Once a final alignment is determined, OPPD will work directly with impacted landowners to gather additional information used for the detailed design of the transmission lines and will explain the right-of-way process, including proposed or existing easements.

OPPD will meet with landowners along the route to discuss:

- Overview of the transmission line and project details
- Property characteristics and challenges
- Ownership rights
- Proposed or existing easements (and easement acquisition if necessary)
- Utility access needs for the new or rebuilt line
- Construction and restoration following completion, including construction-related damage reimbursement

An **easement** gives OPPD the right to use another's land for a specific, limited purpose. It does **not** grant full ownership of the land to the utility.



## Action Item

### BOARD OF DIRECTORS

November 19, 2024

#### ITEM

Acquisition of Property Rights for Utility Operations Infrastructure Projects

#### PURPOSE

Authorize use of eminent domain as necessary to acquire permanent and temporary easements for electric transmission facilities on approved projects for the North Douglas County Transmission Project (NDCTP) which include a new transmission line along State Street between 114<sup>th</sup> and 140<sup>th</sup> Streets (Segment 1), transmission line rebuild between 101<sup>st</sup> and State Streets and 60<sup>th</sup> and Garvin Streets (Segment 2), and a transmission line rebuild along Interstate 680 from 108<sup>th</sup> & Blondo to 101<sup>st</sup> and State Street (Segment 3). The transmission improvements will provide more reliable and resilient power to our service territory and will enhance the power grid's ability to withstand physical and weather-related threats. The project will support new infrastructure that is part of OPPD's long-range plan for a balanced generation portfolio.

#### FACTS

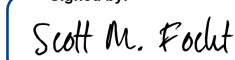
- a. This requested eminent domain authorization covers property rights that need to be acquired for Utility Operations infrastructure to connect substations to the transmission grid, enhance system resiliency and reliability, and support load growth.
- b. As part of Segment 1, Omaha Public Power District (OPPD) is planning to build a new, approximately 2.3-mile, double-circuit (161/345-kilovolt) transmission line along State Street between 114<sup>th</sup> and 140<sup>th</sup> Streets.
- c. As part of Segment 2, Omaha Public Power District is planning to rebuild 3.7-miles of an existing double-circuit (161-kilovolt) transmission line into a new double-circuit (161/345-kilovolt) transmission line between 101<sup>st</sup> & State streets and 60<sup>th</sup> & Garvin streets.
- d. As part of Segment 3, Omaha Public Power District (OPPD) is planning to rebuild approximately 4.1-miles of an existing double-circuit (161-kilovolt) transmission line into a new double-circuit (161/345-kilovolt) transmission line along Interstate 680 from 108<sup>th</sup> & Blondo to 101<sup>st</sup> and State Street.
- e. Permanent easements as needed are required for the construction, operation and maintenance of transmission facilities. Temporary easements may be required for pre-engineering survey access as well as temporary construction needs.
- f. There has been Public Involvement throughout routing and siting. Engagement will continue with landowners through the property rights acquisition process.
- g. OPPD will commence negotiations to voluntarily acquire the necessary property rights for the transmission facilities following appropriate notices being sent to landowners and after required public hearing(s).

- h. OPPD will undertake reasonable efforts to voluntarily acquire the necessary property rights through good faith negotiations. However, the use of eminent domain may be necessary if voluntary agreement cannot be achieved by the District and landowners.
- i. Management will report the filing of eminent domain actions to the Board.
- j. This requested authorization extends through the duration of the North Douglas County Transmission Project. Additional authorizations after that date for the covered projects will be requested, as needed.

### ACTION

Authorization by the Board of Directors to commence eminent domain proceedings for permanent and temporary easements as needed on parcels not acquired voluntarily after all reasonable efforts have been made.


### RECOMMENDED:

Signed by  


B620AD4382E3463...  
Scott M. Focht

Vice President – Corporate Strategy  
and Governance

### APPROVED FOR BOARD CONSIDERATION:

Signed by  


AC399FDCFE66247E...  
L. Javier Fernandez

President and Chief Executive Officer

### Attachments:

North Douglas County Transmission Project Route Map  
North Douglas County Transmission Project Fact Sheet  
Resolution