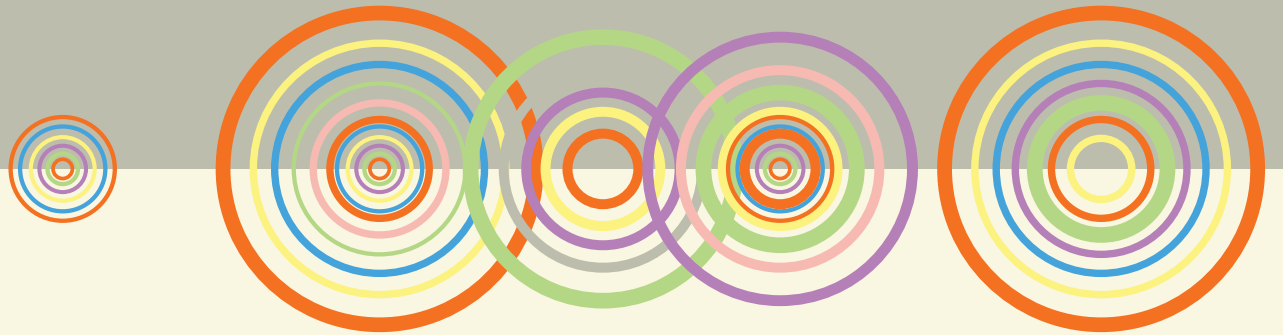


➤ 09.18.25 ➤

PRESIDENT'S REPORT



AUGUST 2025 BASELOAD GENERATION

Nebraska City Unit 1 – Capacity Factor: 80%

Nebraska City Unit 2 – Capacity Factor: 83%

North Omaha Unit 4 – Capacity Factor: 68%

North Omaha Unit 5 – Capacity Factor: 54%

AUGUST 2025 BALANCING GENERATION

Cass County – Capacity Factor: 4%

Jones Street – Capacity Factor: 1%

Sarpy County – Capacity Factor: 11%

Turtle Creek – Capacity Factor: 33%

North Omaha Unit 1 – Capacity Factor: 7%

North Omaha Unit 2 – Capacity Factor: 8%

North Omaha Unit 3 – Capacity Factor: 29%

AUGUST 2025 RENEWABLE GENERATION

Capacity Factor for Renewables is 35.1%

Capacity Factor for Community Solar is 26.7%

Capacity Factor for Platteview Solar is 25.4%

Capacity Factor for Wind is 31.2%

AMI Open Houses & Webinars

Sept

SEPT. 4

Airport & Downtown - Schenzel Community Center

SEPT. 9

North Omaha - Adams Park Community Center

SEPT. 23

Webinar: 5-6 p.m.

SEPT. 25

South Omaha - Kroc Center

SEPT. 29

Bellevue - Bellevue Public Library

Oct

OCT. 2

Westgate - Westside Middle School

OCT. 9

Millard & Elkhorn - Hampton Inn West

OCT. 23

Webinar: 5-6 p.m.

OCT. 30

Woodcliff/Colon - ESU2 Independent School

Nov/Dec

NOV. 6

Ceresco & Ashland - VOC Community Center

NOV. 13

Tecumseh - Johnson County Central Public Elementary

NOV. 18

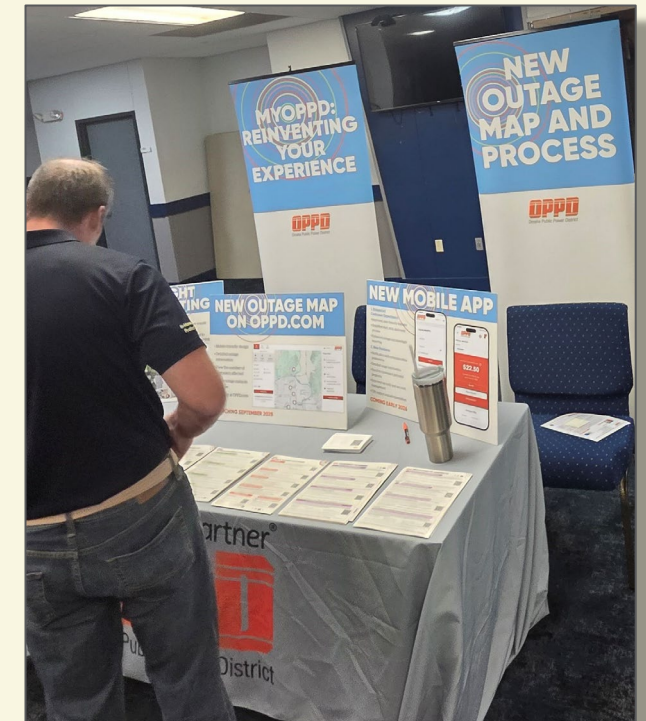
Peru - Peru City Hall

NOV. 19

Webinar: 5-6 p.m.

DEC. 9

Webinar: 5-6 p.m.



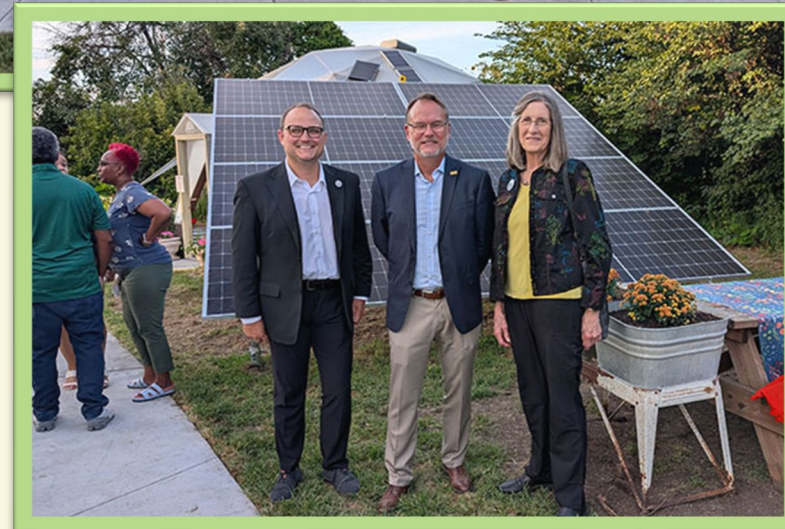
Open houses run from 5-7 p.m.

More information can be found at

oppd.com/smartmeters

CITY SPROUTS RIBBON CUTTING

- City Sprouts hosted a ribbon cutting on August 28 to celebrate the completion of their Greener Together project.
- In 2024 they received \$71,630 in Greener Together funding.
- This funding went to constructing accessible sidewalks, adaptive gardening tools, solar panels, and wayfinding signage.



IN MEMORIAM REMEMBERING THOSE WE LOST

Kenneth R Kitchen

Transportation Mechanic

December 27, 2000

