

NEW GENERATION & TRANSMISSION UPDATE

➤ 02.17.26 ➤



Omaha Public Power District

AGENDA

- Generation Update
- Transmission and Substation Update
- Renewables and Storage

PROGRESS: NEW GEN



➤ Generator arrived in Gretna in early January

Q1 2026

Turtle Creek Station

- Foundation work for demineralized water and fuel oil tank complete.
- Mud mat set for generator, a key step so Kiewit can pour the foundation for the turbine in the next month and a half
- Trenching and installation of underground piping and electrical conduit continues.

KEY WINS

- **Equipment arrivals:** TCS generator and first of two generator step-up transformers.
- **Schedule.** Good weather and daylight accelerated work, including the mud mat two weeks early.

Budget



Small variances. Monitoring risks.

Schedule



20% complete. Building float. Working through timing for heavy hauls, equipment arrivals



BEFORE



AFTER



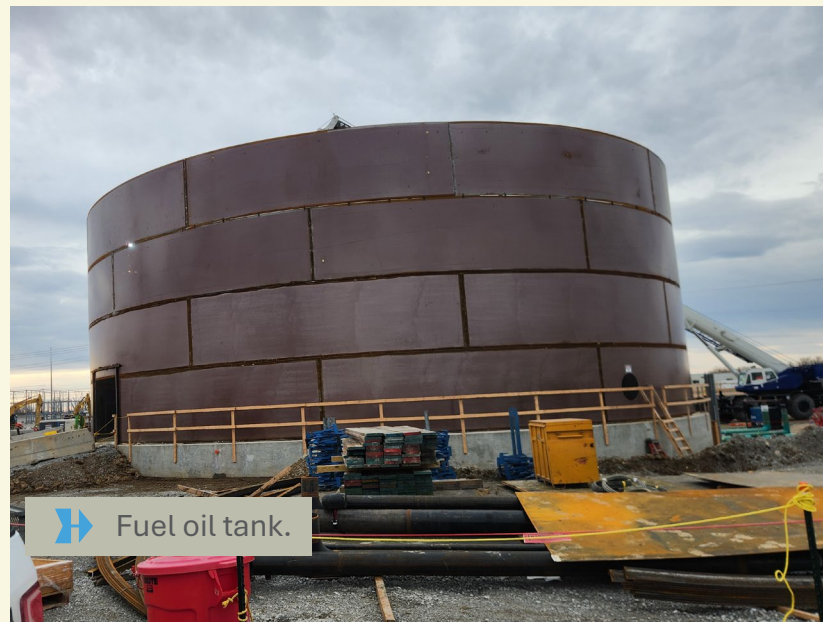
Turbine foundation transforms from duct, pipe, risers, grounding and piles to a mud mat base.

PROGRESS: NEW GEN

Q1 2026


Cass County Station


- Deep foundations completed for new combustion turbine generators.
- Water Treatment Building foundation has been poured.
- Construction of fuel oil and demineralized water tank in progress.
- Contractor work on site totaled more than 171,000 hours last year, with nearly three times that expected in 2026



KEY WINS

- **First of five GSUs** delivered to Cass County Station.
- **Training rolled out** for both Cass County and Turtle Creek on improved tools and process for safety observations

Budget  Small variances. Monitoring risks.

Schedule  **21% complete.** Monitoring delays on procurement, deliveries and pipe fabrication.

PROJECT KICKOFF

BELLEVUE RELIABILITY PROJECT

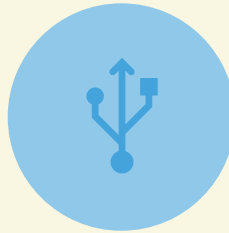
OPPD is upgrading transmission, substation and distribution systems in Bellevue to create more resiliency and reliability for the community and to pave the way for planned business growth.



INVESTMENT IN INFRASTRUCTURE TO **SUPPORT GROWTH** IN SOUTHEAST BELLEVUE, INCLUDING THE NEW GOOD LIFE DISTRICT.

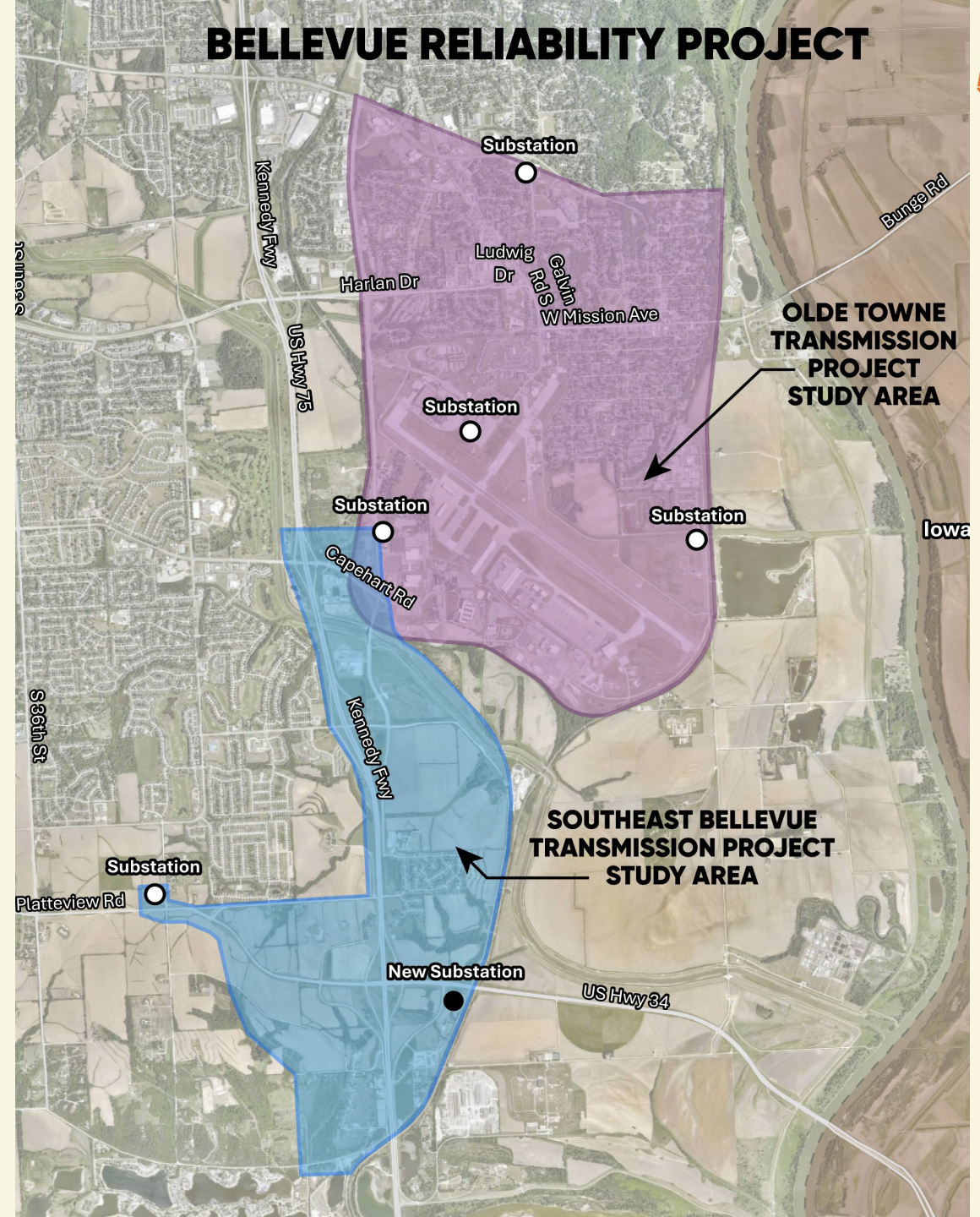


CREATING LONG-TERM SOLUTIONS TO **ADDRESS SYSTEM VULNERABILITIES** IDENTIFIED IN THE 2019 FLOOD.



UPGRADES AGING PART OF SYSTEM – SOME POLES AND SUBSTATIONS DATE BACK TO THE 1940S

More information: www.oppdcommunityconnect.com/bellevue



PROGRESS: TRANSMISSION & SUBSTATION



Q1 2026

Cass-to-Sarpy T-Line

- Foundations complete for Platte River crossing, which will carry distribution and transmission lines.

North Douglas County T-Line

- Construction underway along State Street (Segment 1).
- Tree-clearing happening in areas for rebuilt line roughly along I-680 and near and east of Lake Cunningham (Segments 2 and 3).



KEY WINS

- Grant status updated for **Joint Transmission Interconnection Queue (JTIQ)**.
- **Transmission and substation** alliance contract kick off with new processes and increased role clarity to drive efficiencies in project execution and with contractors.
- **Plans on track** for the March installation of river-crossing structures, which will be tallest in our district and built to withstand extreme weather.
- Q1 2026 kick-offs planned for **three new transmission** projects.

SCHEDULE



All projects are on track or ahead of schedule.

BUDGET



Potential for tariffs & market demand to create impacts in 2026.

RENEWABLES AND STORAGE

PIERCE COUNTY ENERGY CENTER

PROJECT OVERVIEW & STATUS

Project Nameplate Capacity

- **Solar:** 420 MW
- **Energy Storage:** 170 MW

Location: Pierce County, Nebraska

Developer: NextEra Energy Resources

Estimated Commercial Online Date: 2027



Enhanced structure providing an optimized partnership among OPPD, Google and NextEra Energy Resources

Contingent items include:

- **Firm network transmission service study**

Construction activity progress

- County road construction: 100%
- Site grading: 100%
- Substation grading: 50%
- Racking installation: 50%
- Panel installation: 40%

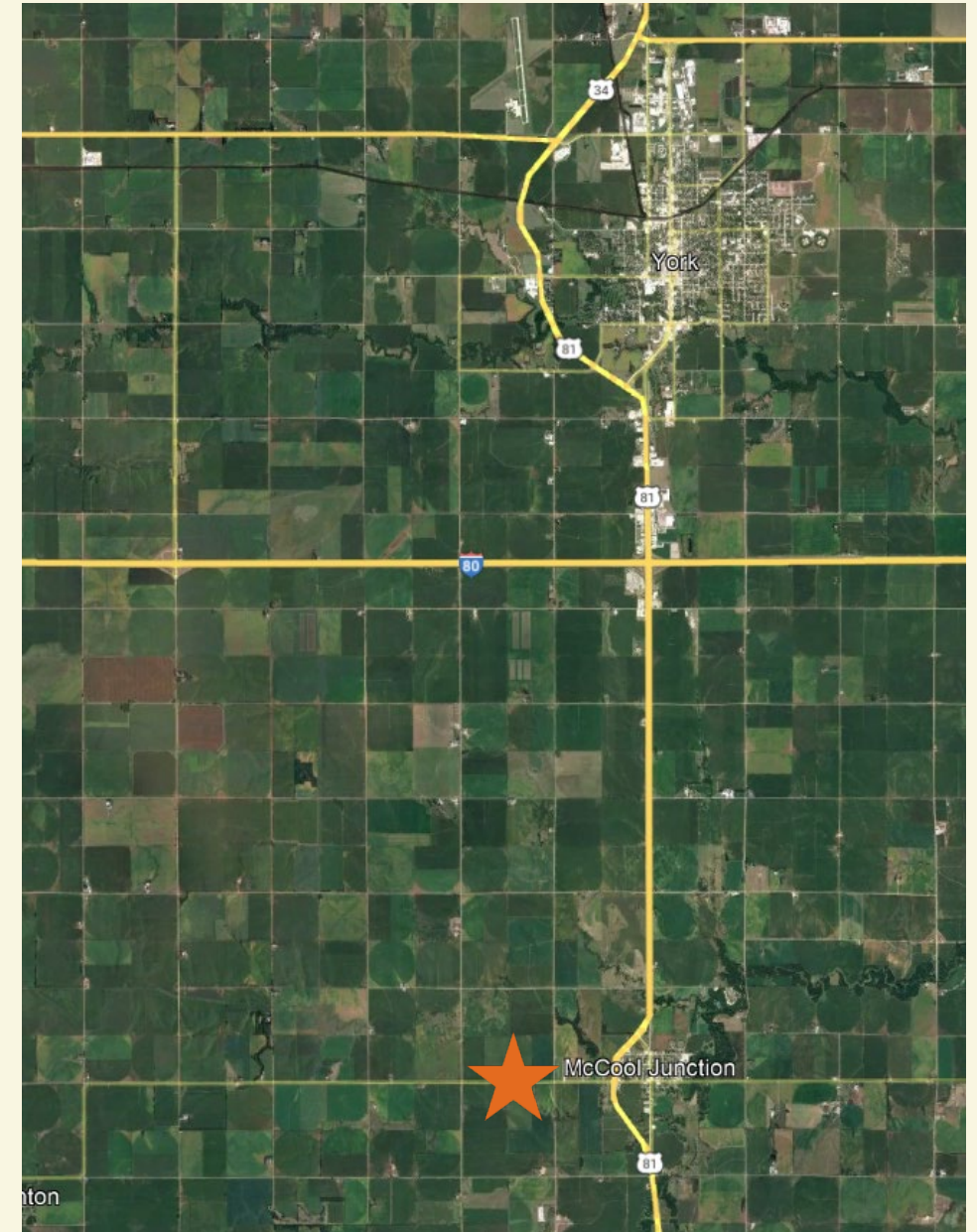


Pierce County Energy Center

K-JUNCTION SOLAR

Project Overview & Status

- Generation Interconnection Agreement between OPPD, NPPD, and SPP effective August 2023
- OPPD support for York County to develop reasonable regulations.
- Timeline:
 - **July 2024:** County commissioners sent regulations to the Planning & Zoning Committee to re-develop
 - **Q3-4 2024:** County-hired consultant developed comprehensive plan and advice for solar regulations
 - **Feb. 2025:** Planning & Zoning Committee voted to send original regulations back to the County Commissioners with no changes
 - **April 2025:** County Commissioners rejected restrictive regulations
 - **Jan. 2026:** Deb Robertson appointed as a County Commissioner and allows board to continue to develop regulations
- Project Team advocating for reasonable regulations and exploring future partnerships to develop project.



★ General solar facility location

» **QUESTIONS?**