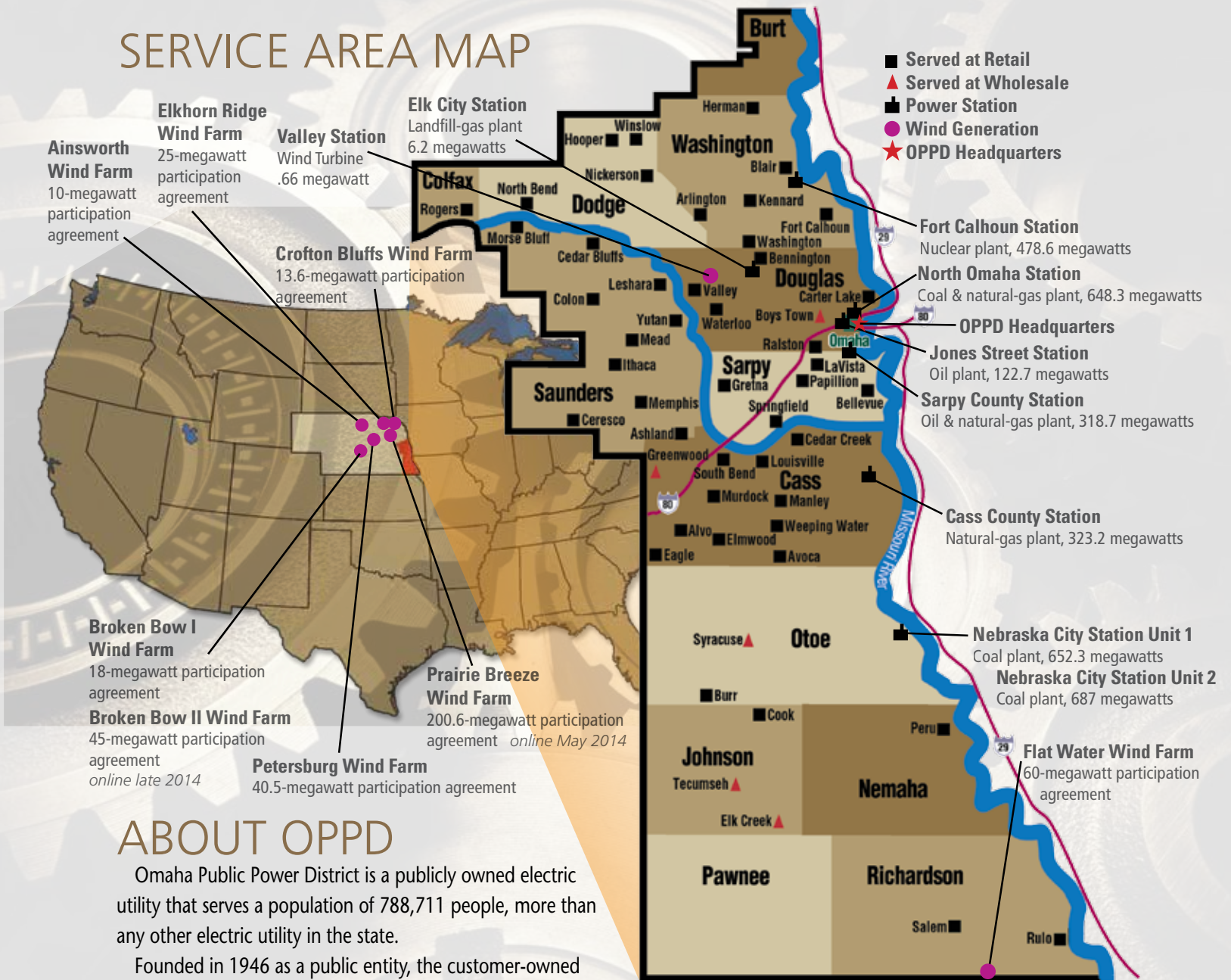


SERVICE AREA MAP



ABOUT OPPD

Omaha Public Power District is a publicly owned electric utility that serves a population of 788,711 people, more than any other electric utility in the state.

Founded in 1946 as a public entity, the customer-owned utility is governed by an elected board of eight directors. While its headquarters is located in Omaha, Neb., OPPD has several other locations in its 13-county, 5,000-square-mile service area in southeast Nebraska.

The majority of OPPD's power comes from three baseload power facilities: North Omaha Station and Nebraska City Station, both coal-fired, and Fort Calhoun Station, a nuclear power unit. Additional energy comes from three peaking units and renewable energy resources, including a landfill-gas unit and wind turbines.