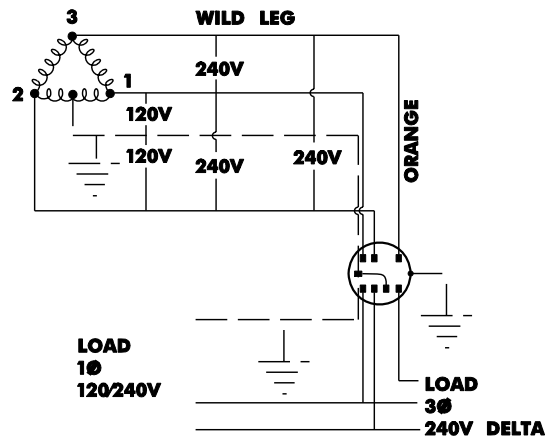


THREE PHASE, 4-WIRE, CLOSED DELTA SOCKETS

1.07.6

SECTION
1.07H
OVERHEAD
ONLY

120/240/240V 3Ø 4W



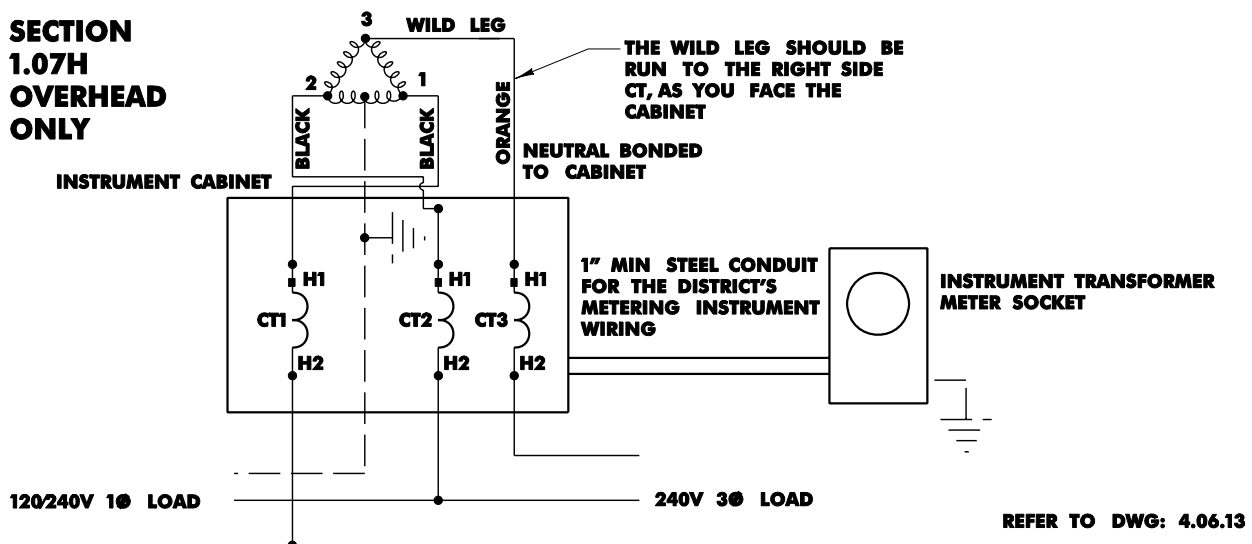
REFER TO DWGS: 4.06.13

NOTE: MAXIMUM SINGLE PHASE LOAD
IS LIMITED TO FIVE PER CENT OF THE
TOTAL LOAD ON BANK

THREE PHASE, 4-WIRE, CLOSED DELTA INSTRUMENT TRANSFORMERS (CT'S)

120/240/240V 3Ø 4W

SECTION
1.07H
OVERHEAD
ONLY



REFER TO DWG: 4.06.13

CT1 AND CT2 HAVE THE SAME RATIO
CT3 HAS A RATIO HALF OF CT1 AND CT2
IE: CT1 - 400/5
CT2 - 400/5
CT3 - 200/5