

Cass-to-Sarpy Transmission Project: Routing, Siting & Public Involvement Update

Troy Via

VP, Utility Operations and COO

September 19, 2023

Project Overview

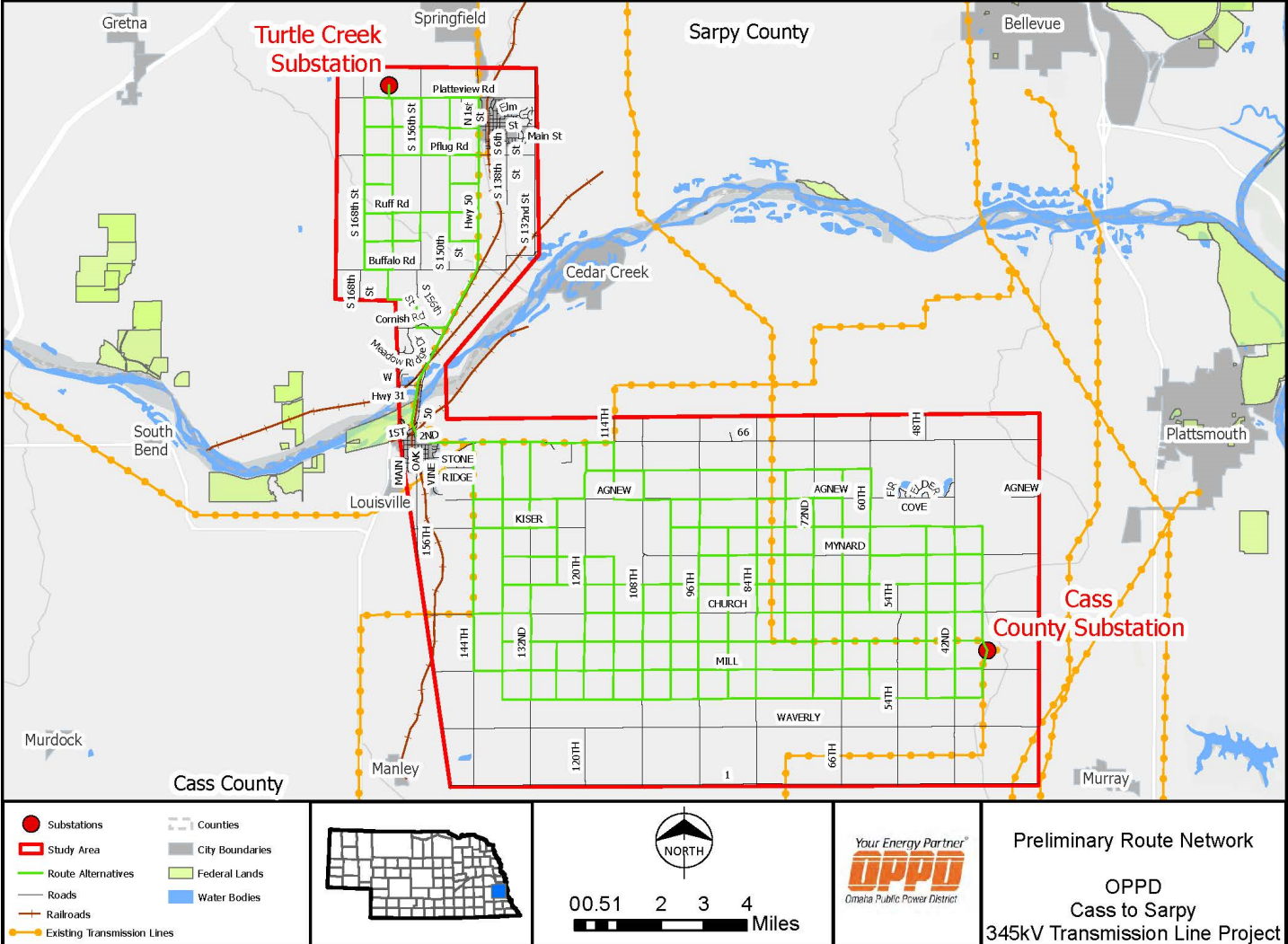
- Construct an approximately 23-mile, 345-kilovolt transmission line
 - Build line between the Turtle Creek Station and the Cass County Balancing Station
 - Connect to an existing line from Turtle Creek Station to a substation off 180th and Giles.
 - Support increased electric usage and planning for balanced portfolio of energy
 - Ensure system resiliency and reliability during peak events



Routing, Siting and Public Involvement Process



We are here!



Routing & Siting Criteria

How is a route selected?

Potential routes are considered based on many factors:

Engineering



Airports



Cost



Constructability



Highways



Structures (other)



Irrigation/
Pivots



Existing/Planned
Utilities



Wells

Environmental



Conservation
Areas



Floodplains



Historic &
Archaeological Sites



Wooded
Areas



Wetlands/
Waterways



Threatened &
Endangered Species



Social



Businesses



Cemeteries



Places of Worship



Commercial/
Industry



Agriculture



New & Planned
Developments



Residences/
Homes



Parks &
Recreation



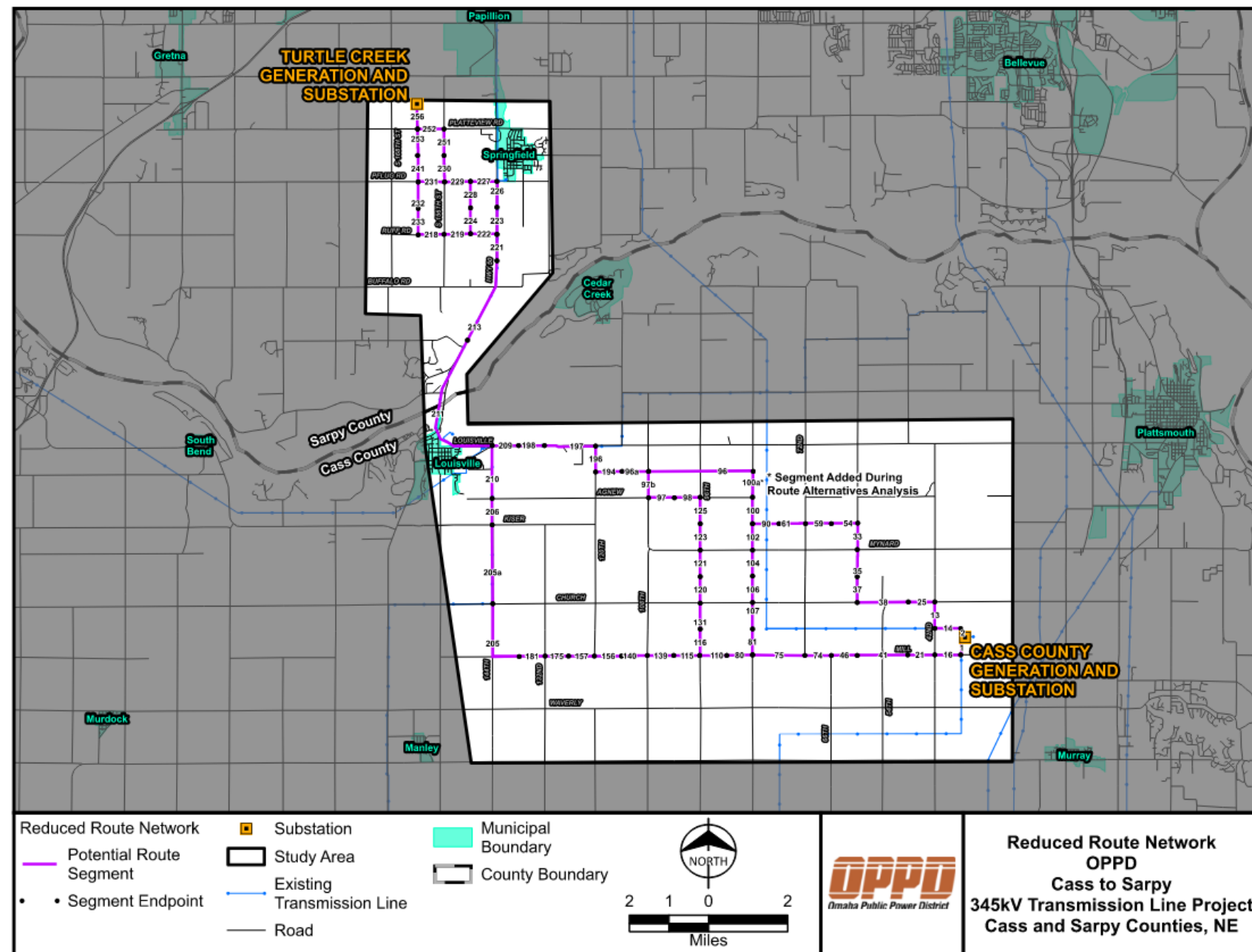
Phase 1 - Feedback

- 100 mapping tool comments/ property input
- 163 public attendees at two Open House events
- 82 completed written questionnaires
- Additional comments and input received through other communication channels



Phase 2 – Reduced Route Segment Options

- 5 distinct routes in Sarpy County
- 4 distinct routes in Cass County
- Includes segments to create alternate pathways
- Geographically diverse options
- New route segment added to network



Issued: 9/14/2023

Next Steps

- ❖ October 4-5, 2023
 - Phase 2: Public Open House Events
- ❖ October-December 2023
 - Phase 3: Comment review and analysis
- ❖ December 2023
 - Route Announcement
- ❖ 2024
 - Engineering/Permitting/Right of Way Activities
- ❖ 2025
 - Public Hearing and Right of Way Acquisition
 - Material and Contractor Sourcing
- ❖ 2026
 - Construction starts
- ❖ December 2026
 - Estimated In-Service Date



Questions?

